

WAAS CH 56530 W08A	APP CRS 076°	Rwy Idg TDZE Apt Elev	3953 3942 3942
--	------------------------	-----------------------------	---

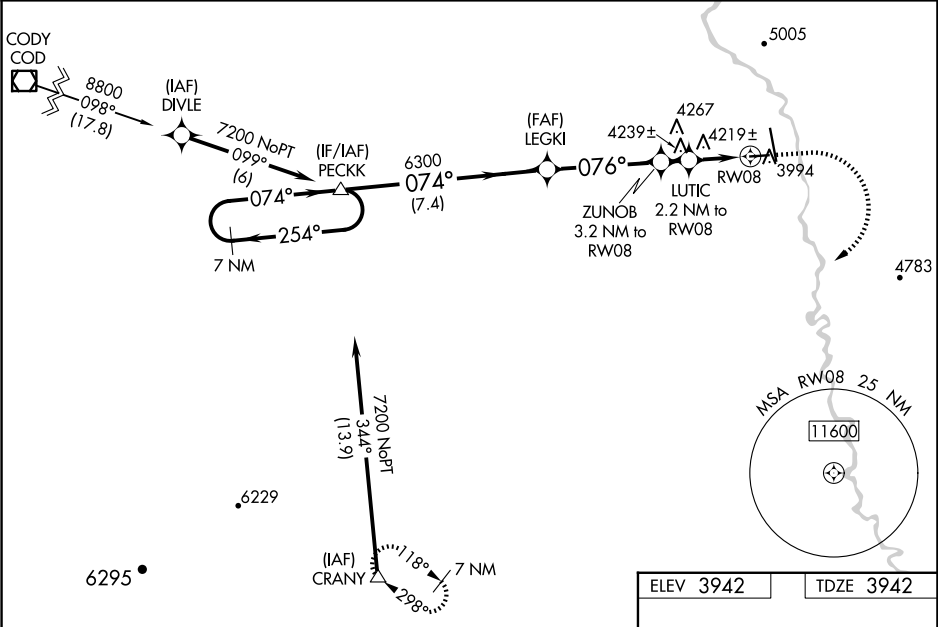
RNAV (GPS) RWY 8

SOUTH BIG HORN COUNTY (GEY)

DME/DME RNP-0.3 NA. Straight-in minimums NA at night. When local altimeter setting not received use Cowley/Lovell/Byron altimeter setting: increase LPV DA to 4279 feet and LNAV/VNAV DA to 4654 feet. Increase LPV visibility, all Cts ¼ SM; increase all MDA 100 feet and LNAV Cts C/D visibility ¼ SM. Rwy 8 helicopter visibility reduction below ¾ SM NA. Baro-VNAV and VDP NA when using Cowley/Lovell/Byron altimeter setting. For uncompensated Baro-VNAV systems, LNAV/VNAV NA below -26°C (-14°F) or above 51°C (124°F).

MISSED APPROACH: Climb to 4400 then climbing right turn to 9000 direct CRANY and hold, continue climb-in-hold to 9000.

ASOS 135.325	SALT LAKE CENTER 127.75 351.9	CTAF 122.9
------------------------	---	----------------------



<div>7 NM Holding Pattern</div> <div>7200</div> <div>GP 3.00° TCH 40</div>		<div>PECKK</div> <div>7.4 NM</div> <div>A</div>	<div>LEGKI</div> <div>6300</div> <div>4.1 NM</div> <div>B</div>	<div>ZUNOB</div> <div>3.2 NM to RW08</div> <div>1 NM</div> <div>C</div>	<div>LUTIC</div> <div>2.2 NM to RW08</div> <div>0.6 NM</div> <div>D</div>	<div>4400</div> <div>9000</div> <div>CRANY</div> <div>△</div> <div>*LNAV only</div>
<div>←254°</div> <div>074°→</div> <div>074°</div> <div>076°</div> <div>5000</div> <div>4680</div> <div>*1.6 NM to RW08</div> <div>RW08</div>						
		<div>1.6 NM</div>				
CATEGORY		A	B	C	D	
LPV DA		4192-1 250 (300-1)				
LNAV/VNAV DA		4567-2½ 625 (700-2½)				
LNAV MDA		4480-1 538 (600-1)			4480-1½ 538 (600-1½)	
CIRCLING		4680-1 738 (800-1)	4700-1 758 (800-1)	5320-3 1378 (1400-3)		5460-3 1518 (1600-3)

