

VORTAC TRM 116.2 Chan 109	APP CRS 307°	Rwy Idg TDZE Apt Elev	N/A N/A -115
---	------------------------	-----------------------------	---

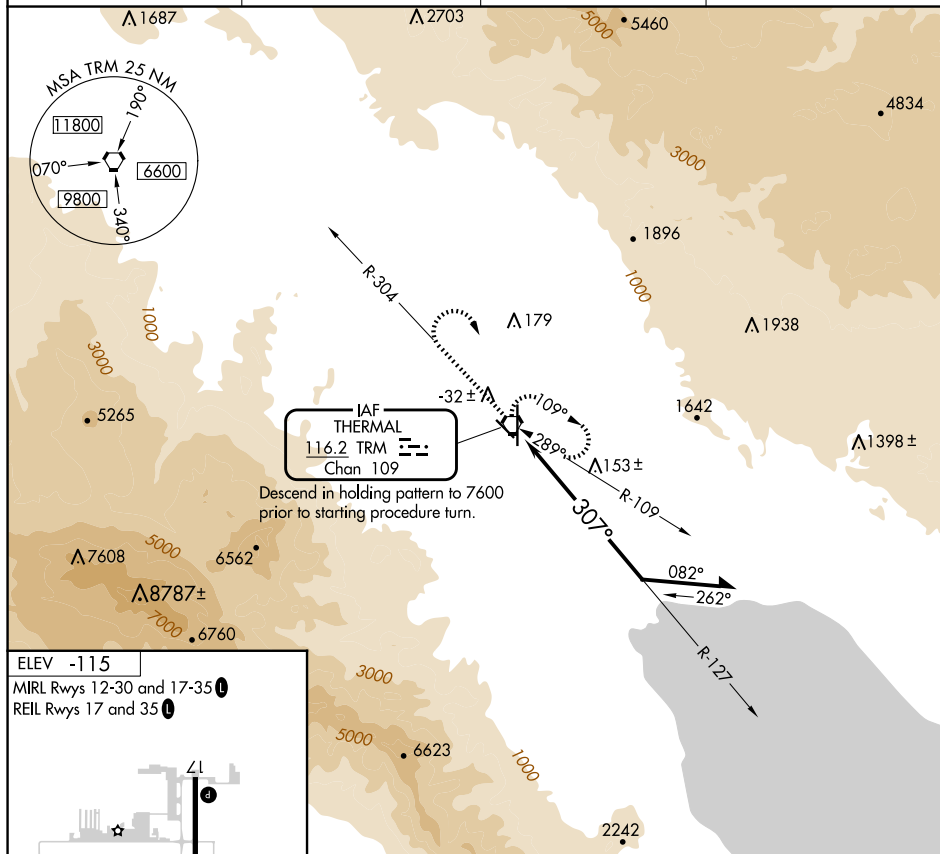
VOR-A

JACQUELINE COCHRAN RGNL (TRM)

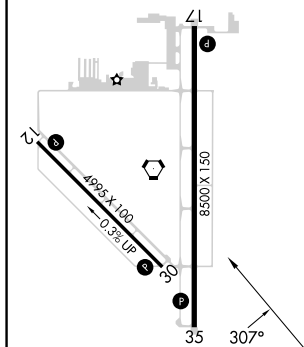


MISSED APPROACH: Climb to 2000 on TRM VORTAC R-304 then climbing right turn to 5400 direct TRM VORTAC and hold, continue climb-in-hold to 5400.


ASOS 118.325	SOCAL APP CON 135.275 251,1	CLNC DEL 120.225	UNICOM 123.0 (CTAF) 0
------------------------	---------------------------------------	----------------------------	---------------------------------



ELEV -115
MIRL Rwy's 12-30 and 17-35 **L**
REIL Rwy's 17 and 35 **L**



2000 ↑ TRM R-304	5400 ↘	TRM ⬡	TRM VORTAC 127° 307° 2900 Remain within 10 NM
------------------------	-----------	----------	--

CATEGORY	A	B	C	D
 CIRCLING	1400-1½ 1515 (1600-1¼)	1400-1½ 1515 (1600-1½)	1400-3	1515 (1600-3)