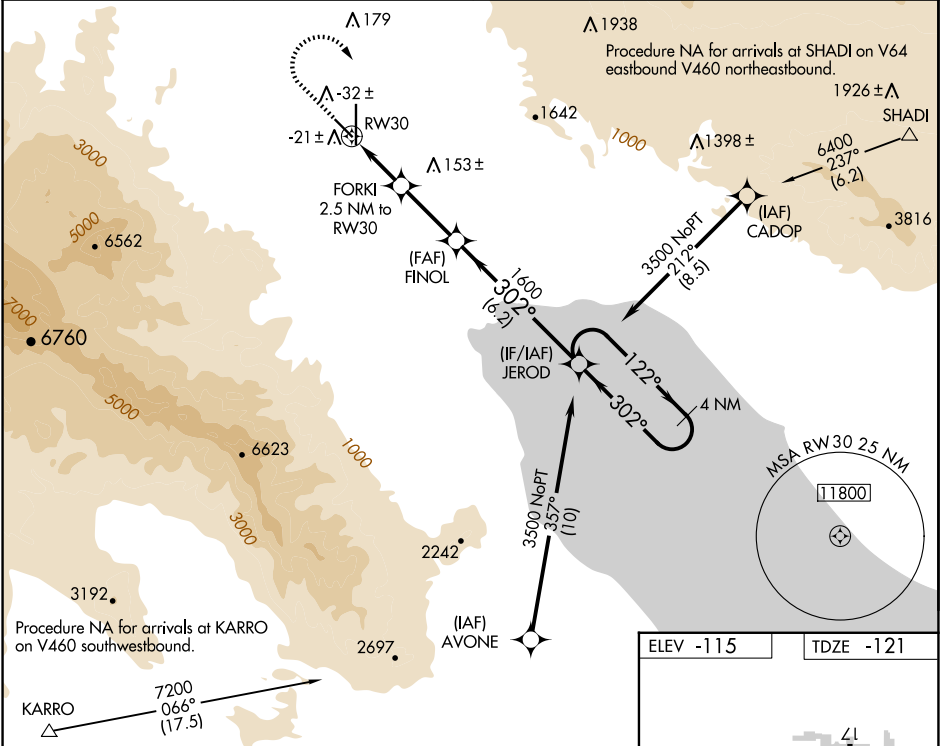


WAAS CH <b>77941</b> <b>W30A</b>	APP CRS <b>302°</b>	Rwy Idg TDZE Apt Elev	<b>4995</b> <b>-121</b> <b>-115</b>
--	------------------------	-----------------------------	---

RNAV (GPS) RWY 30

JACQUELINE COCHRAN RGNL (TRM)

RNP APCH.		MISSED APPROACH: (Do not exceed 230K until JEROD) Climb to 1200 then climbing right turn to 3500 direct JEROD and hold.	
▼ ▲ Rwy 30 helicopter visibility reduction below ¾ SM NA.			
ASOS <b>118.325</b>	SOCAL APP CON <b>135.275 251.1</b>	CLNC DEL <b>120.225</b>	UNICOM <b>123.0 (CTAF) 0</b>



1200	3500	JEROD	VGSI and RNAV glidepath not coincident (VGSI Angle 3.00/TCH 25).	
* LNAV only		FORKI 2.5 NM to RW30	FINOL	JEROD 4 NM Holding Pattern
* 1.1 NM to RW30				
RW30				
GP 3.00° TCH 45				
1.1 1.4 NM 2.8 NM 6.2 NM				
CATEGORY	A	B	C	D
LPV DA	129-¾ 250 (300-¾)			
LNAV MDA	260-1 381 (400-1)		260-1½ 381 (400-1½)	
CIRCLING	320-1 435 (500-1)	340-1 455 (500-1)	460-1½ 575 (600-1½)	780-3 895 (900-3)

