

WAAS CH 69327 W33A	APP CRS 333°	Rwy Idg TDZE 108 Apt Elev 120	4999
--	------------------------	---	-------------

RNAV (GPS) RWY 33

NORTHEAST PHILADELPHIA (PNE)

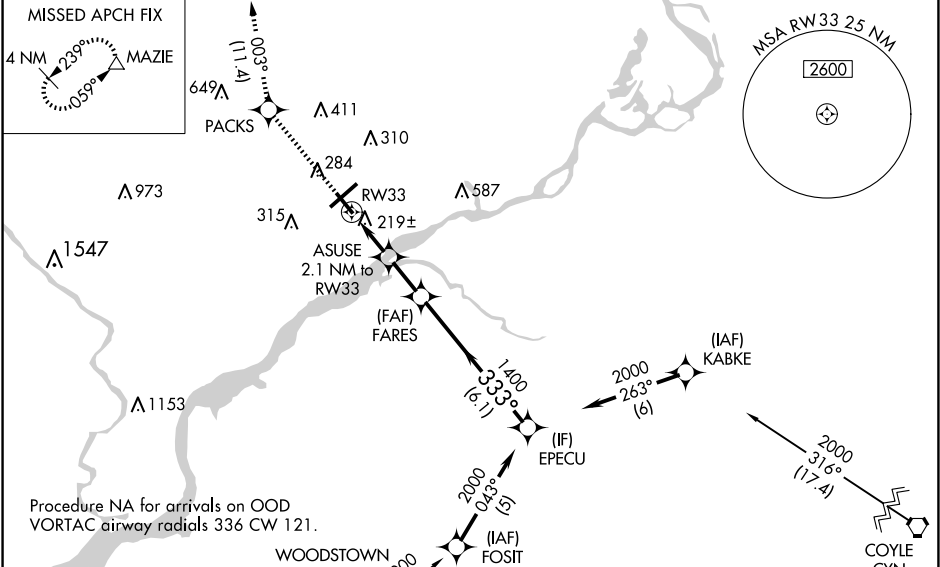
⚠

Baro-VNAV NA when using Philadelphia Intl altimeter setting. For uncompensated Baro-VNAV systems, LNAV/VNAV NA below -15°C (5°F) or above 43°C (109°F). When local altimeter setting not received, use Philadelphia Intl altimeter setting: increase LPV DA to 430 feet and LNAV/VNAV DA to 450 feet and all LPV and LNAV/VNAV visibilities ¼ SM; increase all MDAs 60 feet and LNAV visibility Cat C/D ¼ SM and Circling visibility Cat C/D ¼ SM. DME/DME RNP-0.3 NA.

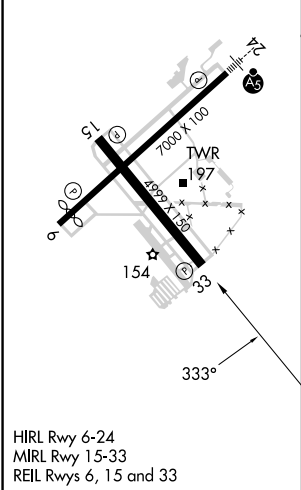
MISSED APPROACH:

Climb to 2500 direct PACKS and on track 003° to MAZIE and hold.

ATIS 121.15	PHILADELPHIA APP CON 123.8 291.7	NORTHEAST PHILADELPHIA TOWER ★ 126.9 (CTAF) 0 278.8	GND CON 121.7	CLNC DEL 127.25	UNICOM 122.95
-----------------------	--	---	-------------------------	---------------------------	-------------------------



ELEV 120	D	TDZE 108
----------	----------	----------



HIRL Rwy 6-24
MIRL Rwy 15-33
REIL Rwy 6, 15 and 33

2500	PACKS	MAZIE	FARES	EPECU
↑	tr 003°	△	1400	2000
* LNAV only				
ASUSE 2.1 NM to RW33				
RW33				
* 800				
2.1 NM 1.8 NM 6.1 NM				
CATEGORY	A	B	C	D
LPV DA	380-1 272 (300-1)			
LNAV/VNAV DA	400-1 292 (300-1)			
LNAV MDA	480-1 372 (400-1)			
CIRCLING	700-1	580 (600-1)	720-1½ 600 (600-1½)	780-2 660 (700-2)