

WAAS CH 70608 W06A	APP CRS 051°	Rwy Idg 7400 TDZE 2291 Apt Elev 2320
--	------------------------	---

RNAV (GPS) RWY 6

COEUR D'ALENE/PAPPY BOYINGTON FLD (COE)

RNP APCH - GPS.

▼

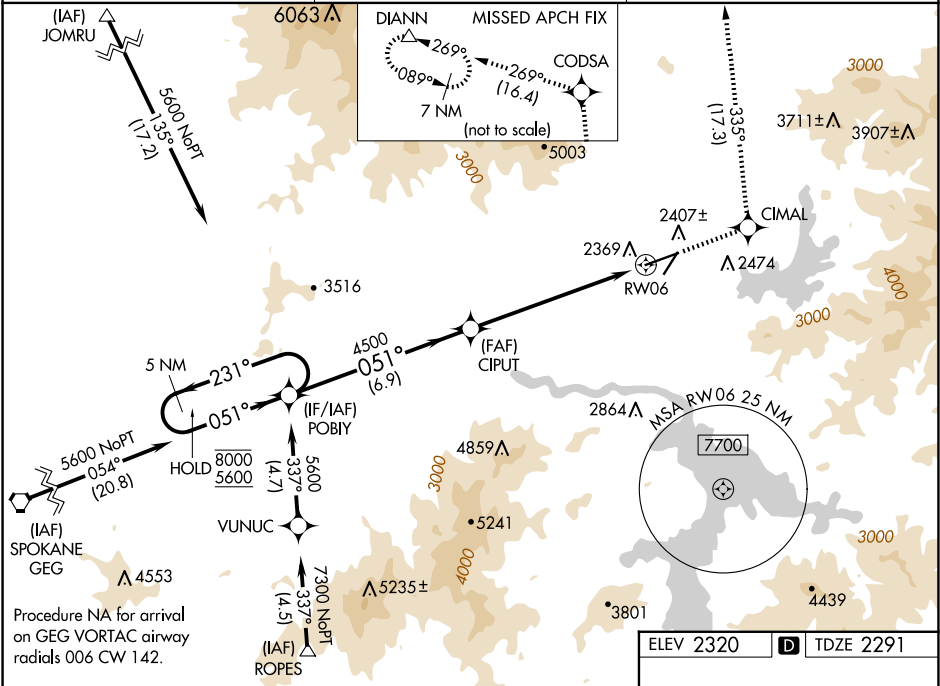
⚠

Circling Rwy 2 NA at night. For uncompensated Baro-VNAV systems, LNAV/VNAV NA below -21°C or above 53°C. Circling NA for Cat D southeast of Rwy 6-24.

MALSR

MISSED APPROACH: Climb to 7000 direct CIMAL and on track 335° to CODSA and on track 269° to DIANN and hold.

AWOS-3PT 135.075	SPOKANE APP CON 132.1 263.0	UNICOM 122.8 (CTAF)
----------------------------	---------------------------------------	-------------------------------



5 NM Holding Pattern		POBIY	7000 ↑		CIMAL ✧	tr 335°	CODSA ✧	tr 269°	DIANN △
8000 5600	← 231° → 051°			CIPUT 4500		1.3 NM to RW06			
GP 3.00° TCH 56		051°	4500						
		6.9 NM	5.4 NM	1.3					
CATEGORY	A	B	C	D					
LPV DA	2491-½ 200 (200-½)								
LNAV/ VNAV	DA	2654-¾ 363 (400-¾)							
LNAV MDA	2740-½ 449 (500-½)			2740-1 449 (500-1)					
CIRCLING	2740-1 420 (500-1)	2880-1 560 (600-1)	3020-2 700 (700-2)	3180-2¾ 860 (900-2¾)					

ELEV 2320 D TDZE 2291

MIRL Rwy 2-20
HIRL Rwy 6-24
REIL Rws 2 and 24