

LOC I-COE	APP CRS	Rwy Idg	7400
110.7	051°	TDZE	2291
		Apt Elev	2320

ILS or LOC RWY 6

COEUR D'ALENE/PAPPY BOYINGTON FLD (COE)

DME required.

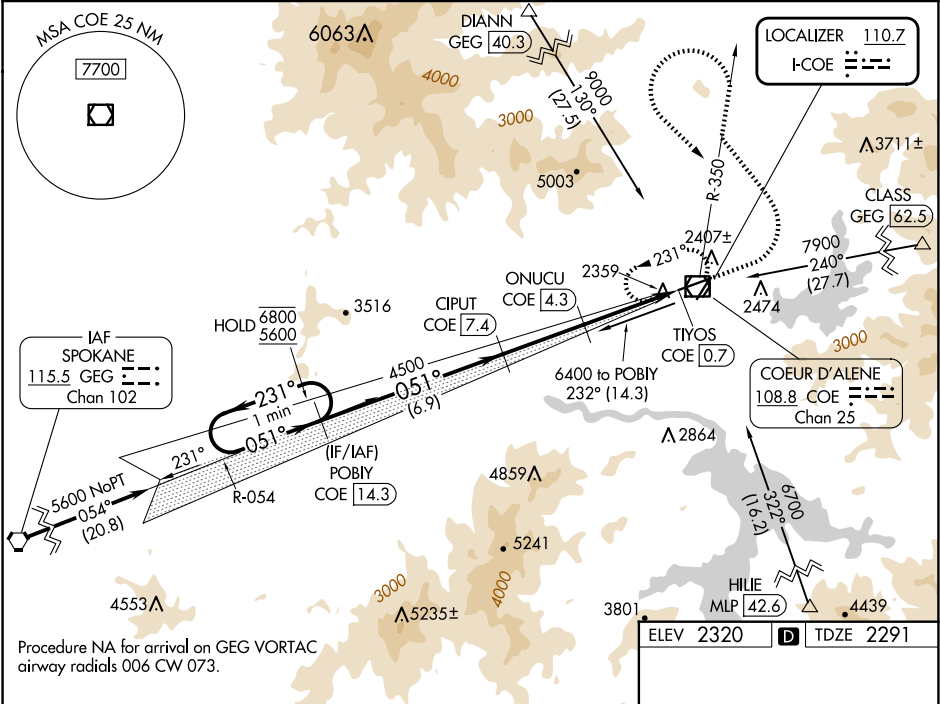
▼

Circling Rwy 2 NA at night. Autopilot coupled approach NA below 2840. Simultaneous reception of I-COE localizer and COE DME required. Circling NA for Cat D southeast of Rwy 6-24.

MALSR

MISSED APPROACH: Climb to 2900 then climbing left turn to 6000 on COE R-350 outbound then climbing left turn to 6500 on COE R-350 inbound to COE VOR/DME and hold.

AWOS-3PT 135.075	SPOKANE APP CON 132.1 263.0	UNICOM 122.8 (CTAF)
---------------------	--------------------------------	------------------------



Use COE DME when on the localizer course.		2900 ↑	6000 ↖	COE R-350 outbnd	6500 ↖	COE R-350 inbnd	COE
One Minute Holding Pattern		POBIY COE 14.3	CIPUT COE 7.4	ONUUCU COE 4.3	TIYOS COE 0.7		
6800 ← 231° 5600 → 051°		4500		3480			
GS 3.00° TCH 56		6.9 NM		3.1 NM	3.6 NM		
CATEGORY	A	B	C	D			
S-ILS 6	2491-½ 200 (200-½)						
S-LOC 6	2860-½	569 (600-½)	2860-1 569 (600-1)	2860-1¼ 569 (600-1¼)			
CIRCLING	2860-1 540 (600-1)	2880-1 560 (600-1)	3020-2 700 (700-2)	3180-2¾ 860 (900-2¾)			

