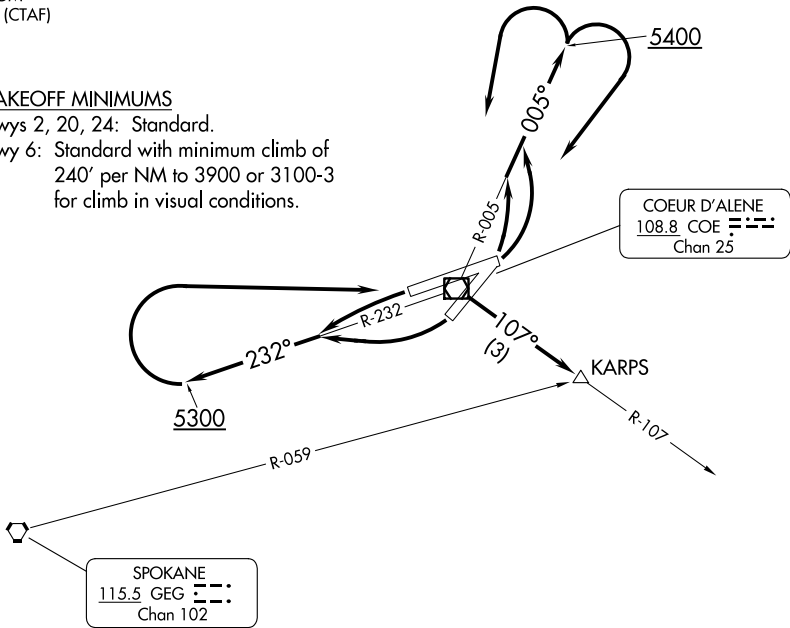


SPOKANE DEP CON  
132.1 263.0  
AWOS-3PT  
135.075  
UNICOM  
122.8 (CTAF)

TAKEOFF MINIMUMS

Rwys 2, 20, 24: Standard.  
Rwy 6: Standard with minimum climb of 240' per NM to 3900 or 3100-3 for climb in visual conditions.



TAKEOFF OBSTACLE NOTES

Rwy 20: Trees beginning 165' from DER, 276' right of centerline, up to 109' AGL/2399' MSL.  
Tree 2914' from DER, 425' left of centerline, 38' AGL/2383' MSL.  
Rwy 6: Poles beginning 895' from DER, 690' right of centerline, up to 44' AGL/2354' MSL.  
Trees beginning 1149' from DER, 720' right of centerline, up to 103' AGL/2563' MSL.

NOTE: Chart not to scale.

DEPARTURE ROUTE DESCRIPTION

TAKEOFF RUNWAY 2: Climbing left turn to 5400 on COE R-005, then left or right turn direct COE VOR/DME, then on COE R-107 to KARPS INT to MEA for route of flight.  
TAKEOFF RUNWAY 6: Climbing left turn to 5400 on COE R-005, then left or right turn direct COE VOR/DME, then on COE R-107 to KARPS INT to MEA for route of flight or climb in visual conditions to cross Coeur D'Alene/Pappy Boyington Field Airport at or above 5300 before proceeding on course. When executing VCOA, notify ATC prior to departure.  
TAKEOFF RUNWAY 20: Climbing right turn, thence . . . .  
TAKEOFF RUNWAY 24: Climbing left turn, thence . . . .

. . . . climb on COE R-232 to 5300, then right direct COE VOR/DME, then on COE R-107 to KARPS INT to MEA for route of flight.

NW-1, 07 AUG 2025 to 04 SEP 2025

NW-1, 07 AUG 2025 to 04 SEP 2025