

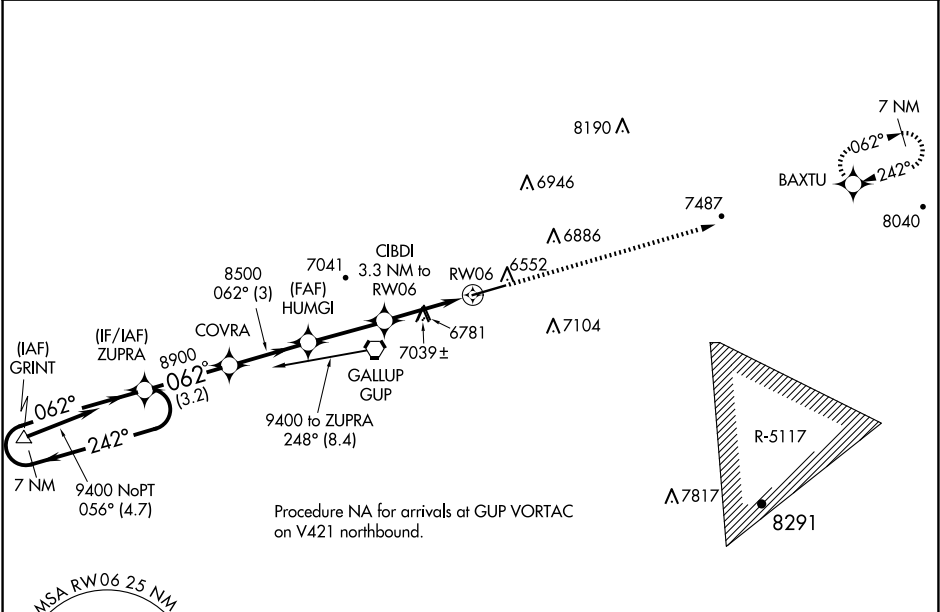
APP CRS	Rwy Ldg	7312
062°	TDZE	6465
	Apt Elev	6472

RNAV (GPS) RWY 6

GALLUP MUNI (GUP)

RNP APCH - GPS.	MISSED APPROACH: Climb to 9500 direct BAXTU and hold.
<div><div>▼</div><div>⚠</div></div> Rwy 6 helicopter visibility reduction below ¾ SM NA. When local altimeter setting not received, use RQE altimeter setting and increase all MDAs 80 feet, increase LNAV Cat A visibility ¼ SM. VDP NA with RQE altimeter setting.	

ASOS 118.375	ALBUQUERQUE CENTER 124.325 288.25	UNICOM 122.95 (CTAF) 0
-----------------	--------------------------------------	---------------------------



ELEV 6472	TDZE 6465
REIL Rwy 24 0	
MIRL Rwy 6-24 0	

<p>7 NM Holding Pattern</p> <p>ZUPRA</p> <p>COVRA</p> <p>HUMGI</p> <p>CIBDI 3.3 NM to RW06</p> <p>9500</p> <p>BAXTU</p> <p>VGSI and descent angles not coincident (VGSI Angle 3.00/TCH 50).</p>					
<p>9400 ← 242°</p> <p>062° →</p> <p>062°</p> <p>8900</p> <p>8500</p> <p>3.05° TCH 46</p> <p>2.5 NM to RW06</p> <p>7580</p> <p>RW06</p>					
<p>3.2 NM</p> <p>3 NM</p> <p>2.8 NM</p> <p>0.9</p> <p>2.5 NM</p>					
CATEGORY	A		B	C	D
LNAV MDA	7300-1 835 (900-1)		7300-1¼ 835 (900-1¼)	7300-2½	835 (900-2½)
CIRCLING	7300-1¼ 828 (900-1¼)		7460-3 988 (1000-3)	7720-3 1248 (1300-3)	

SW-1, 07 AUG 2025 to 04 SEP 2025

SW-1, 07 AUG 2025 to 04 SEP 2025