

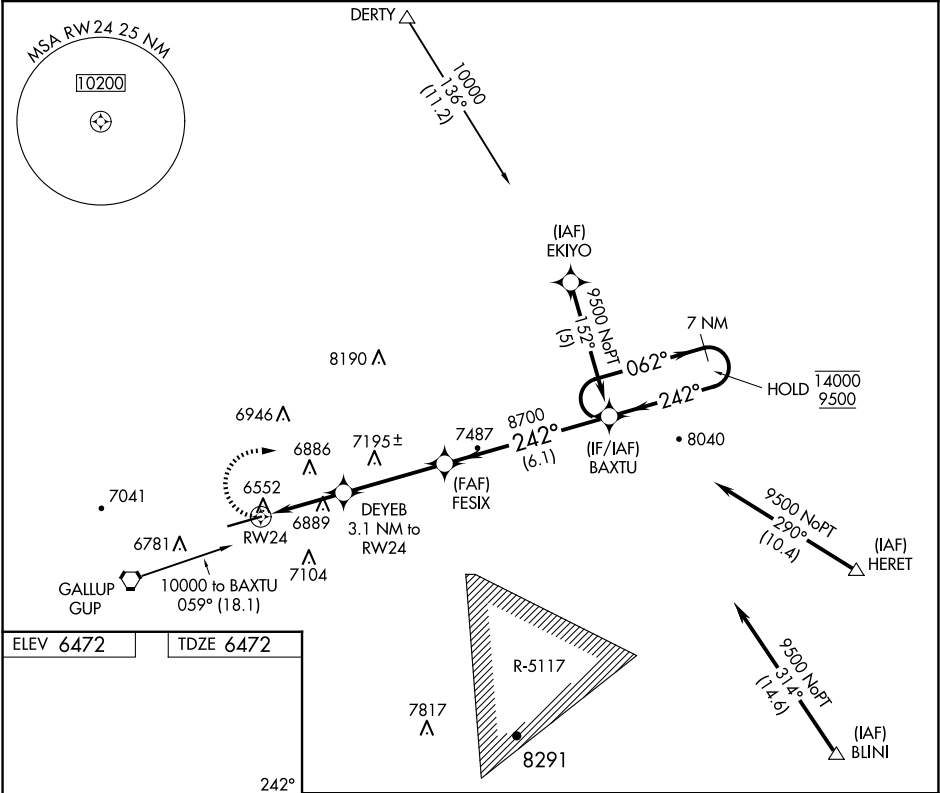
APP CRS	Rwy Ldg	7312
242°	TDZE	6472
	Apt Elev	6472

RNAV (GPS) RWY 24

GALLUP MUNI (GUP)

RNP APCH.	MISSED APPROACH: Climbing right turn to 9500 direct BAXTU and hold.
<div><div>▼</div><div>▲</div></div> Rwy 24 helicopter visibility reduction below ¾ SM NA.	

ASOS 118.375	ALBUQUERQUE CENTER 124.325 288.25	UNICOM 122.95 (CTAF) <b>0</b>
-----------------	--------------------------------------	----------------------------------



9500

BAXTU

VGSI and descent angles not coincident (VGSI Angle 3.00/TCH 48).

7 NM

Holding Pattern

DEYEB

3.1 NM to RW24

7500

FESIX

8700

242°

062°

14000

9500

3.1 NM

3.8 NM

6.1 NM

CATEGORY	A	B	C	D
LNAV MDA	7360-1¼ 888 (900-1¼)		7360-2½ 888 (900-2½)	
CIRCLING	7360-1¼ 888 (900-1¼)		7460-3 988 (1000-3)	7720-3 1248 (1300-3)

REIL Rwy 24

MIRL Rwy 6-24

SW-1, 07 AUG 2025 to 04 SEP 2025

SW-1, 07 AUG 2025 to 04 SEP 2025