

APP CRS	Rwy Ldg	4498
348°	TDZE	1158
	Apt Elev	1166

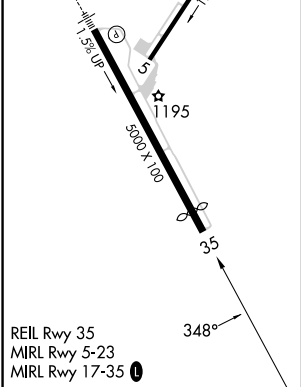
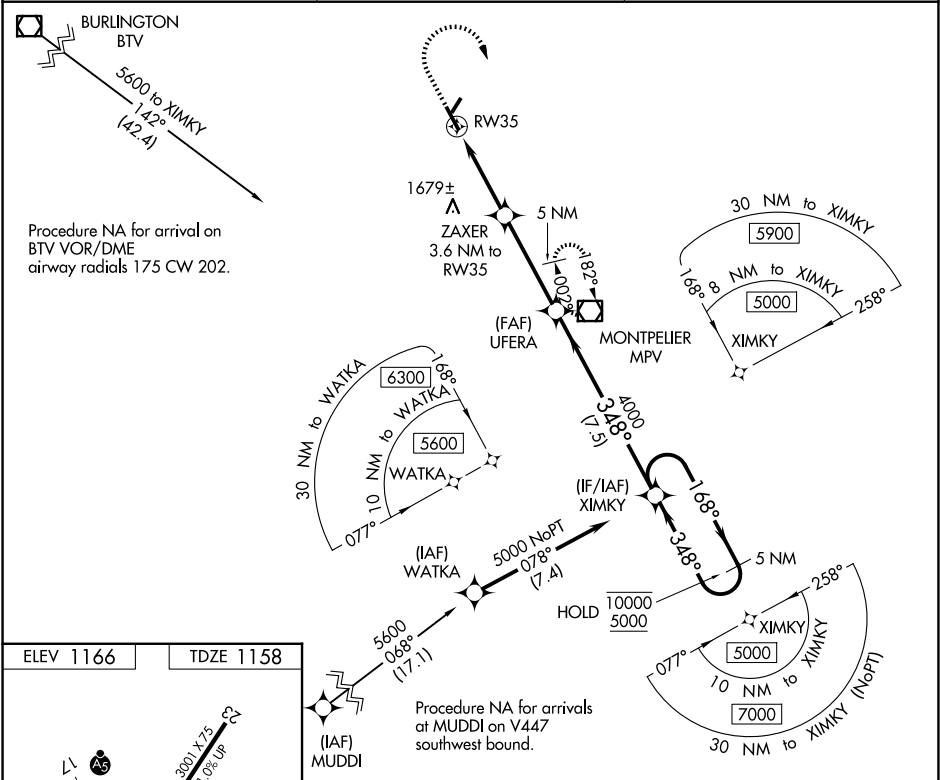
RNAV (GPS) RWY 35
EDWARD F KNAPP STATE (MPV)

RNP APCH:

- ▼ Rwy 35 helicopter visibility reduction below 1 SM NA.
- ▲ NA When local altimeter setting not received, procedure NA.
- ☁ -19°C Straight-in Rwy 35 NA at night, Circling Rwy 5, 35 NA at night.

MISSED APPROACH: (Do not exceed 225K)
Climb to 2400 then climbing right turn to 5100 direct MPV VOR/DME and hold, continue climb-in-hold to 5100.

ASOS 132.675	BOSTON CENTER 135.7 282.2	UNICOM 122.8 (CTAF) 0
-----------------	------------------------------	--------------------------



2400		5100		MPV		5 NM Holding Pattern	
		RW35		ZAXER 3.6 NM to RW35		UFERA	
						XIMKY	
				TCH 55		168° → 10000 ← 348° 5000	
		2560		4000		348°	
3.6 NM		3.9 NM		7.5 NM			
CATEGORY	A		B		C		D
LNAV MDA	1940-1 782 (800-1)		1940-1¼ 782 (800-1¼)		1940-2½ 782 (800-2½)		782 (800-2½)
CIRCLING	1980-1¼		814 (900-1¼)		2700-3 1534 (1600-3)		2900-3 1734 (1800-3)

NE-1, 07 AUG 2025 to 04 SEP 2025

NE-1, 07 AUG 2025 to 04 SEP 2025