

WAAS CH 69611 W17A	APP CRS 168°	Rwy Ldg TDZE Apt Elev	5000 1135 1166
--	------------------------	-----------------------------	---

RNAV (GPS) RWY 17
EDWARD F KNAPP STATE (MPV)

RNP APCH - GPS.

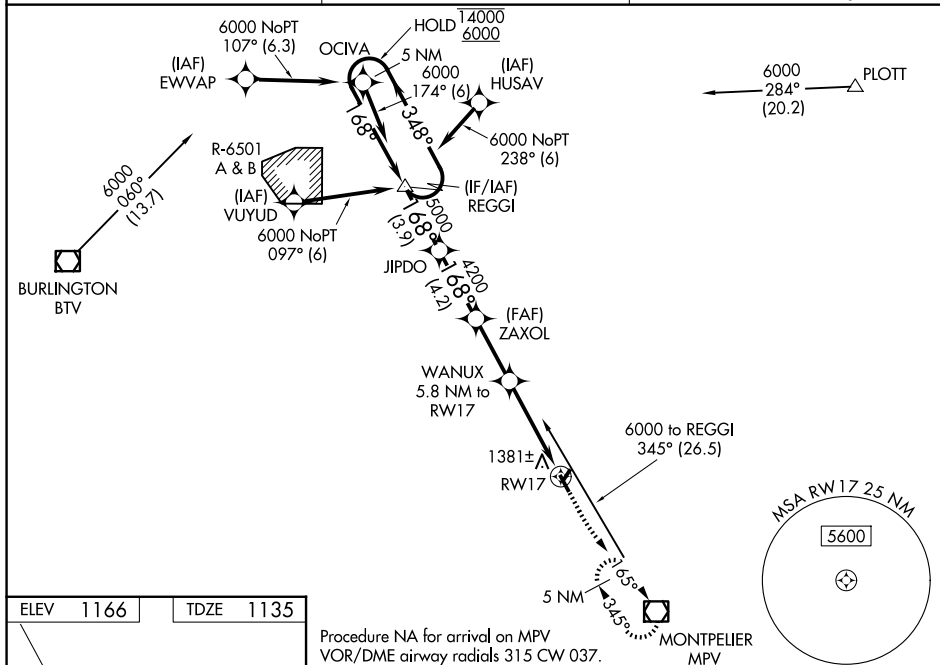
RADAR required for procedure entry at VUYUD.

V Rwy 17 helicopter visibility reduction below 1 SM NA. Inop table does not apply to
A LPV all Cats and LNAV Cats A and B. Baro-VNAV NA. When local altimeter setting
✱ -19°C not received, procedure NA. Straight-in Rwy 17 NA at night. Circling Rwy 5, 17,
 35 NA at night. For inop ALS, increase LNAV/VNAV all Cats visibility to 1 3/8 SM.

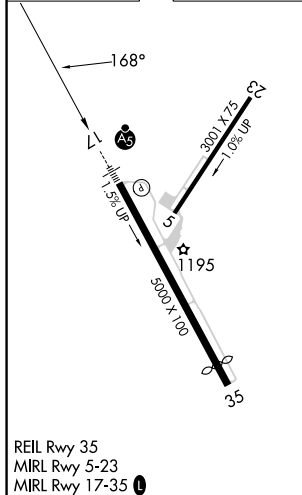
MALSR

MISSED APPROACH:
Climb to 1720 then
climb to 5200 direct
MPV VOR/DME
and hold, continue
climb-in-hold to 5200.

ASOS 132.675	BOSTON CENTER 135.7 282.2	UNICOM 122.8 (CTAF) L
------------------------	-------------------------------------	---------------------------------



ELEV	1166		TDZE	1135
------	------	--	------	------



Procedure NA for arrival on MPV
VOR/DME airway radials 315 CW 037.

[illegible]

EDWARD F KNAPP STATE (MPV)
RNAV (GPS) RWY 17