

WAAS CH <b>69216</b> <b>W30A</b>	APP CRS <b>300°</b>	Rwy Idg TDZE Apt Elev	<b>6751</b> <b>12</b> <b>15</b>
--	------------------------	-----------------------------	---------------------------------------

# RNAV (GPS) RWY 30

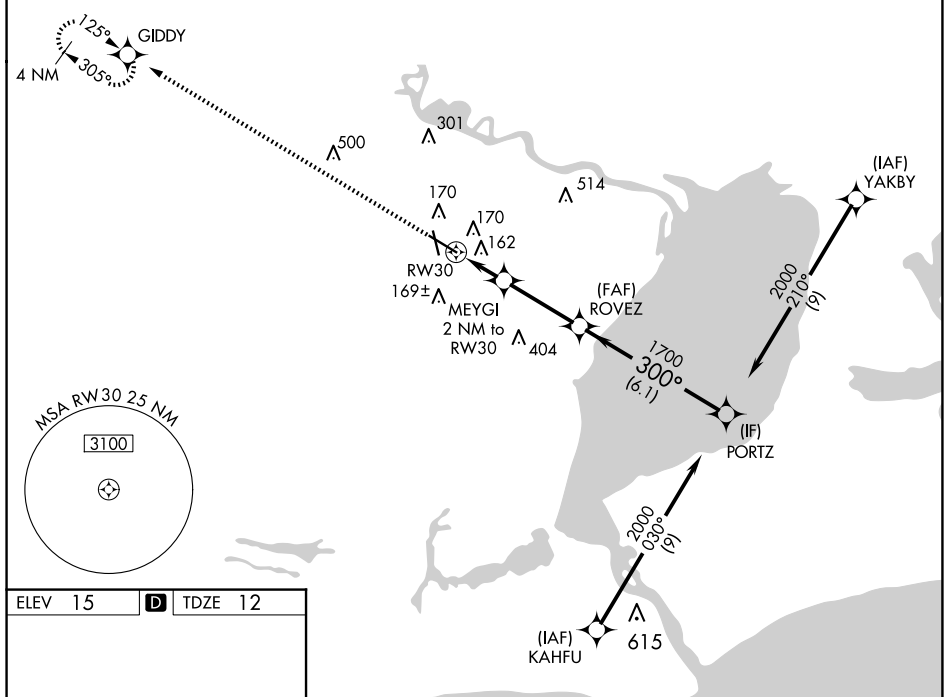
## JACK BROOKS RGNL (BPT)

RNP APCH - GPS.

**⚠** For uncompensated Baro-VNAV systems, LNAV/VNAV NA below -4°C or above 54°C. Rwy 30 helicopter visibility reduction below ¾ SM NA. Baro-VNAV and VDP NA when using Orange County altimeter setting. When local altimeter setting not received, use Orange County altimeter setting: increase LPV DA to 294 feet and all visibilities ¾ SM. Increase LNAV visibility Cat C/D/E ¼ SM. Increase all MDAs 40 feet and LNAV visibility Cat C/D/E ¼ SM.

**MISSED APPROACH:**  
Climb to 3100 direct  
GIDDY and hold,  
continue climb-in-hold  
to 3100.

ATIS <b>126.3</b>	HOUSTON APP CON <b>121.3 377.1</b>	BEAUMONT TOWER ★ <b>119.5 (CTAF) 0</b>	GND CON <b>124.85</b>	CLNC DEL <b>118.3</b>	UNICOM <b>122.95</b>
----------------------	---------------------------------------	---	--------------------------	--------------------------	-------------------------



3100 ↑	GIDDY ✦					
CATEGORY		A	B	C	D	E
LPV DA		262 <sup>-3</sup> / <sub>4</sub>		250 (300 <sup>-3</sup> / <sub>4</sub> )		
RNAV/ VNAV	DA	323 <sup>-7</sup> / <sub>8</sub>		311 (400 <sup>-7</sup> / <sub>8</sub> )		
RNAV MDA		420-1	408 (500-1)	420-1 <sup>1</sup> / <sub>8</sub>		408 (500-1 <sup>1</sup> / <sub>8</sub> )

SC-5, 07 AUG 2025 to 04 SEP 2025

SC-5, 07 AUG 2025 to 04 SEP 2025