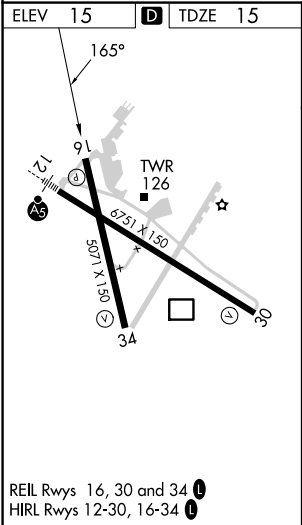
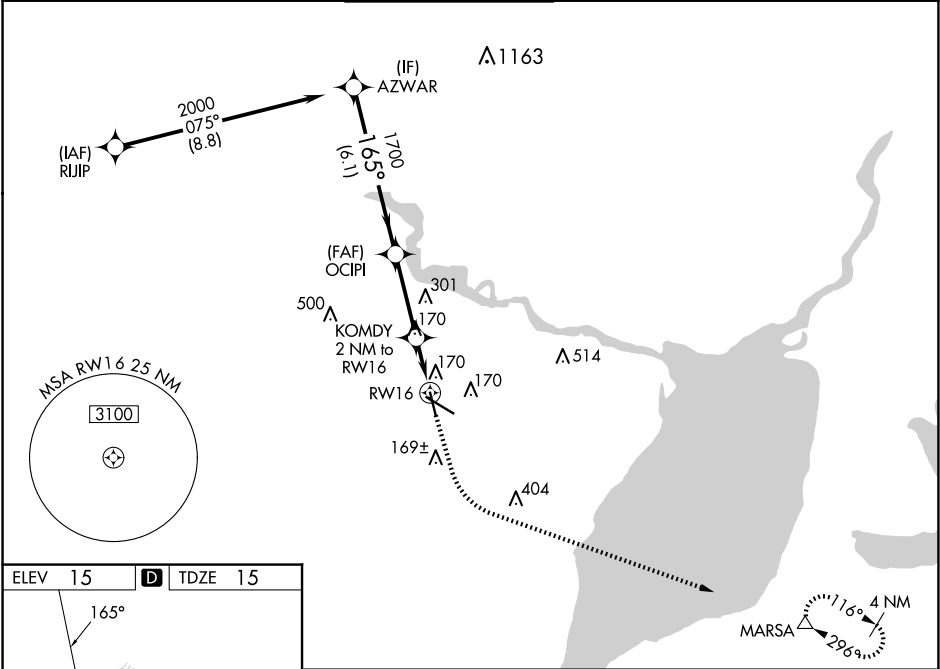


WAAS CH 82316 W16A	APP CRS 165°	Rwy Idg TDZE 15 Apt Elev 15
--	------------------------	---

RNAV (GPS) RWY 16

JACK BROOKS RGNL (BPT)

RNP APCH - GPS.				MISSED APPROACH: Climb to 500 then climbing left turn to 3000 direct MARSA and hold.	
<div>▼ For uncompensated Baro-VNAV systems, LNAV/VNAV NA below -4°C or above 54°C.</div> <div>▲ Baro-VNAV and VDP NA when using Orange County altimeter setting. Rwy 16 helicopter visibility reduction below ¾ SM NA. When local altimeter setting not received, use Orange County altimeter setting: increase LPV DA to 307 feet and all visibilities ⅓ SM; increase LNAV/VNAV DA to 363 feet and all visibilities ⅓ SM; increase all MDAs 40 feet and LNAV visibility Cat C/D/E ¼ SM.</div>					
ATIS 126.3	HOUSTON APP CON 121.3 377.1	BEAUMONT TOWER★ 119.5 (CTAF) 0	GND CON 124.85	CLNC DEL 118.3	UNICOM 122.95



AZWAR		OCIPI		KOMDY		RW16	
2000		1700		1700		1700	
GP 3.00°		165°		170°		170°	
TCH 53		6.1 NM		3.1 NM		0.9 NM	
CATEGORY	A	B	C	D	E		
LPV DA	275-¾		260 (300-¾)				
LNAV/VNAV DA	331-⅞		316 (400-⅞)				
LNAV MDA	420-1	405 (500-1)	420-1⅞	405 (500-1⅞)			