

| | | | |
|--|------------------------|---|-------------|
| WAAS CH 99715 W12A | APP CRS 120° | Rwy Idg TDZE 15 Apt Elev 15 | 6508 |
|--|------------------------|---|-------------|

RNAV (GPS) RWY 12

JACK BROOKS RGNL (BPT')

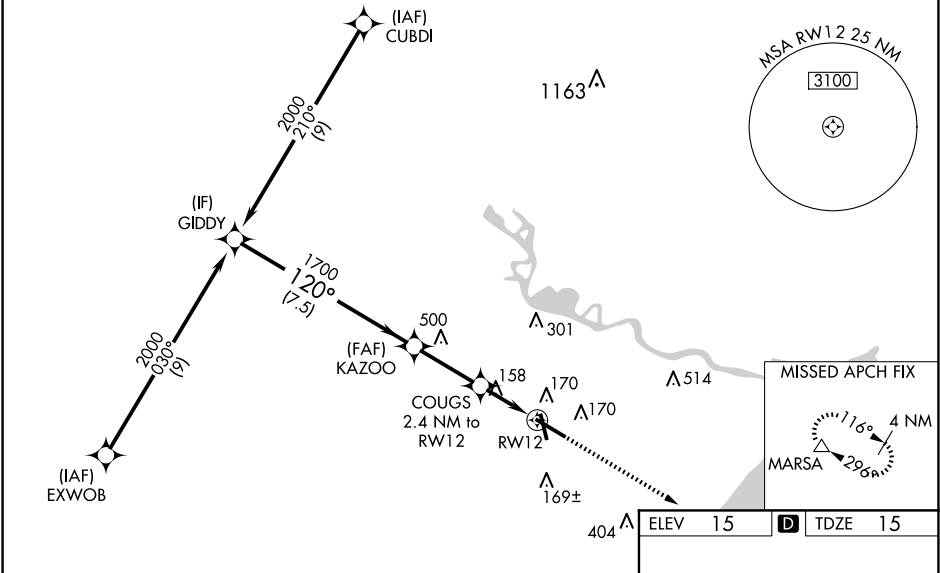
RNP APCH - GPS.

▼ For uncompensated Baro-VNAV systems, LNAV/VNAV NA below -4°C or above 54°C. Baro-VNAV and VDP NA when using Orange County altimeter setting. Rwy 12 helicopter visibility reduction below RVR 4000 NA. When local altimeter setting not received, use Orange altimeter setting: increase LPV DA to 297 feet; increase LNAV/VNAV DA to 464 feet and all visibilities to RVR 4500; increase all MDAs 40 feet and LNAV visibility Cat C/D/E to RVR 5000 and Circling visibility Cat E ¼ SM. Inop table does not apply to LPV. For inop ALS, increase LNAV/VNAV visibility all Cats to RVR 6000; LNAV Cats A/B to RVR 5500, Cat E to 1¾ SM. For inop ALS when using Orange County altimeter setting, increase LPV all Cats visibility to RVR 4500, LNAV/VNAV visibility Cat E to 1¾ SM; and increase LNAV visibility Cats A/B to RVR 5500, Cats C/D/E 1¾ SM.

MALSR

MISSED APPROACH:
Climb to 3000 direct
MARSAs and hold.

| | | | | | |
|----------------------|---------------------------------------|--|--------------------------|--------------------------|-------------------------|
| ATIS 126.3 | HOUSTON APP CON 121.3 377.1 | BEAUMONT TOWER★ 119.5 (CTAF) | GND CON 124.85 | CLNC DEL 118.3 | UNICOM 122.95 |
|----------------------|---------------------------------------|--|--------------------------|--------------------------|-------------------------|



| | | | | | |
|--|--------|-------------|------------------------|------------------------|------------------------|
| <div>GP 3.00° TCH 52</div> <div></div> | | | | | |
| CATEGORY | A | B | C | D | E |
| LPV DA | 265/40 | | 250 (300-¾) | | |
| LNAV/VNAV DA | 432/40 | | 417 (500-¾) | | |
| LNAV MDA | 460/40 | 445 (500-¾) | 460/45 | 445 (500-¾) | |
| CIRCLING | 480-1 | 465 (500-1) | 640-1¾ 625 (700-1¾) | 760-2½ 745 (800-2½) | 820-2¾ 805 (900-2¾) |

