

LOC/DME I-BPT	APP CRS	Rwy Idg	6508
110.15	120°	TDZE	15
Chan 38(Y)		Apt Elev	15

ILS or LOC RWY 12

JACK BROOKS RGNL (BPT)

DME or RADAR required.

▼

Helicopter visibility reduction below RVR 4000 NA. Inop table does not apply to S-ILS 12.

▲

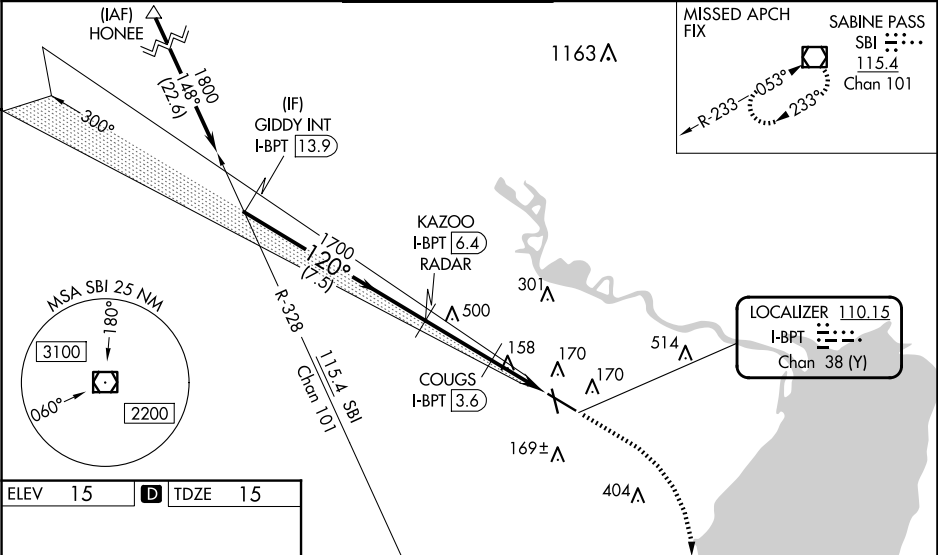
When local altimeter setting not received use Orange County altimeter setting: increase S-ILS 12 DA to 297 feet; increase all MDAs 40 feet. COUGS fix minimums: increase S-LOC 12 visibility Cat C/D/E to RVR 5000. For inop ALS, increase S-LOC visibility Cat A to RVR 5500 and Cat C/D/E to 2½ SM. COUGS fix minimums: increase S-LOC visibility Cat A/B to RVR 5500 and Cat E to 1½ SM. For inop ALS when using Orange County altimeter setting, increase S-ILS 12 all Cats visibility to RVR 4500, S-LOC 12 visibility Cat A to RVR 5500 and Cat C/D/E to 2½ SM. COUGS fix minimums: increase S-LOC 12 visibility Cat A/B to RVR 5500 and Cat C/D/E to 1½ SM. VDP NA when using Orange County altimeter setting.  
\*RVR 1800 authorized with use of FD or AP or HUD to DA, NA when using Orange County altimeter setting.

MALS R

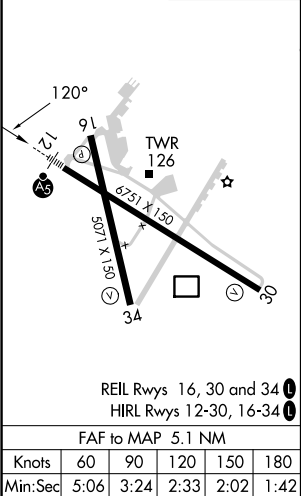
AS

MISSED APPROACH:  
Climb to 500 then climbing right turn to 3000 direct SBI VOR/DME and hold.

ATIS	HOUSTON APP CON	BEAUMONT TOWER*	GND CON	CLNC DEL	UNICOM
126.3	121.3 377.1	119.5 (CTAF) 0	124.85	118.3	122.95



ELEV	15	D	TDZE	15
------	----	---	------	----



Use I-BPT DME when on the localizer course.				
500 3000 SBI				
GIDDY INT I-BPT 13.9 KAZOO I-BPT 6.4 COUGS I-BPT 3.6				
1800 1700 820				
GS 3.00° TCH 52				
7.5 NM 2.8 NM 1.1 NM 1.2 NM				
CATEGORY	A	B	C	D E
S-ILS 12*	265/40 250 (300-¾)			
S-LOC 12	820/40	805 (900-¾)	820-1½	805 (900-1½)
COUGS FIX MINIMUMS (DME REQUIRED)				
S-LOC 12	460/40	445 (500-¾)	460/45	445 (500-¾)