

WAAS
CH **62801**
W14A

APP CRS
136°

Rwy Idg
TDZE **205**
Apt Elev **222**

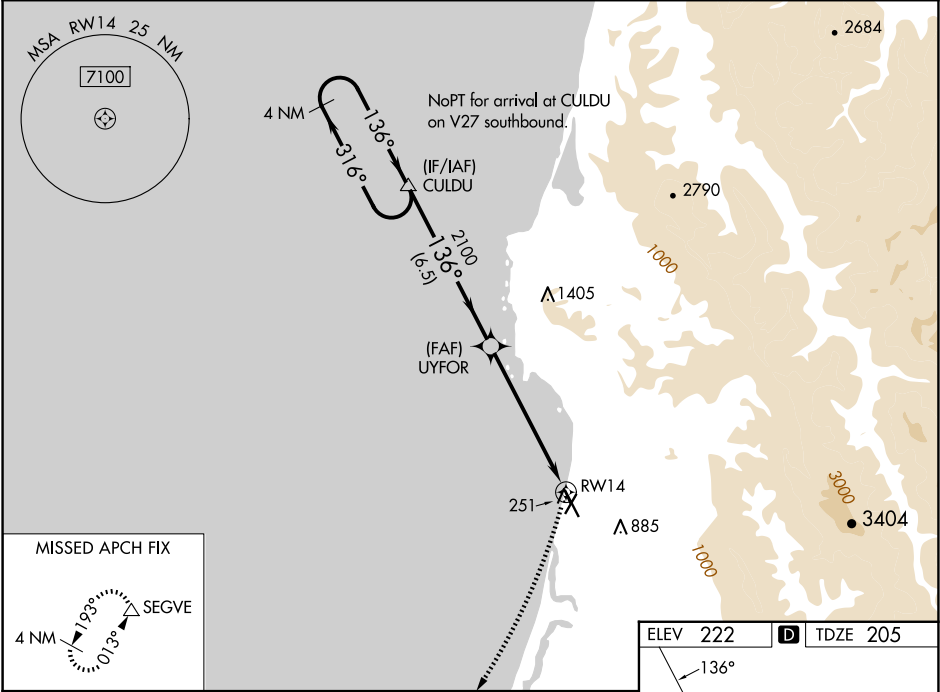
RNAV (GPS) RWY 14

CALIFORNIA REDWOOD COAST-HUMBOLDT COUNTY (ACV)

For uncompensated Baro-VNAV systems, LNAV/VNAV NA below -2°C (29°F) or above 54°C (130°F). Circling NA northeast of Rwy 14-32. DME/DME RNP-0.3 NA. Rwy 14 helicopter visibility reduction below ¾ SM NA.

MISSED APPROACH:
Climbing right turn to 3000
direct SEGVE and hold.

ASOS 118.525	SEATTLE CENTER 124.85 306.3	UNICOM 123.0 (CTAF) 0
------------------------	---------------------------------------	---------------------------------



4 NM Holding Pattern

CULDU

UYFOR

3000

316°

136°

136°

2100

2100

136°

1.8 NM to RW14

RW14

GP 3.00°

TCH 50

6.5 NM

4.1 NM

1.8 NM

3000

SEGVE

* INAV only

CATEGORY	A	B	C	D
LPV DA	455-45 250 (300-7½)			
LNAV/VNAV DA	570-1¼ 365 (400-1¼)			
LNAV MDA	820/55	615 (600-1)	820-1¾ 615 (600-1¾)	
CIRCLING	820-1	598 (600-1)	840-1¾ 618 (700-1¾)	880-2 658 (700-2)

ELEV 222

D

TDZE 205

136°

0.7 NM UP

0.5 NM UP

600 X 150

600 X 150

AS 32

CL Rwy 14

TDZ/CL Rwy 32

MIRL Rwy 1-19

HIRL Rwy 14-32

REIL Rwy 14

REIL Rwy 1