
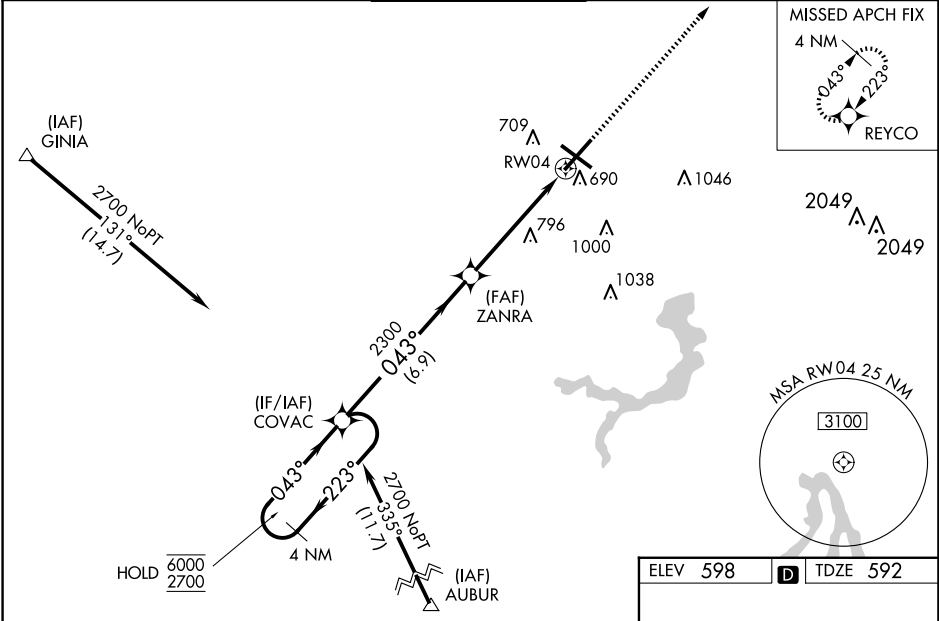


WAAS CH 70309 W04A	APP CRS 043°	Rwy Idg TDZE Apt Elev	7927 592 598
--	------------------------	-----------------------------	---

RNAV (GPS) RWY 4
ABRAHAM LINCOLN CAPITAL (SPI)

RNP APCH - GPS.				<div>MALSR</div> <div></div>	MISSED APPROACH: Climb to 2600 direct REYCO and hold.	
<div><div><div><div><div>▼</div><div>For uncompensated Baro-VNAV systems, LNAV/VNAV NA below -16°C or above 54°C. Baro-VNAV and VDP NA when using Lincoln altimeter setting. For inop ALS, increase LPV all Cats visibility to RVR 4500 and LNAV Cats C/D visibility to 1 3/8 SM. When local altimeter ASR setting not received, use Lincoln altimeter setting and increase LPV DA to 912 feet; increase LNAV/VNAV DA to 989 feet and all visibilities to RVR 3500; increase all MDAs 60 feet and LNAV visibility Cat C/D to RVR 5500 and Circling visibility Cat C/D 1/4 SM. For inop ALS when using Lincoln altimeter setting, increase LPV all Cats visibility to RVR 4500.</div></div></div></div></div>						
ATIS 127.65 270.1		SAINT LOUIS APP CON ★ 126.15 323.0	SPRINGFIELD TOWER ★ 121.3 (CTAF) 0 257.8	GND CON 121.9 348.6	CLNC DEL 121.7	UNICOM 122.95



4 NM Holding Pattern

6000

2700

←223°

043°→

GP 3.00°
TCH 56

COVAC

ZANRA

2300

043°

2300

1.3 NM to RW04

RW04

6.9 NM

3.8 NM

1.3 NM

2600

REYCO

CATEGORY	A	B	C	D
LPV DA	854/24		262 (300-½)	
LNAV/VNAV DA	931/26		339 (400-½)	
LNAV MDA	1060/24	468 (500-½)	1060/50	468 (500-1)
CIRCLING	1060-1 462 (500-1)	1100-1 502 (600-1)	1360-2¼ 762 (800-2¼)	1380-2½ 782 (800-2½)

