

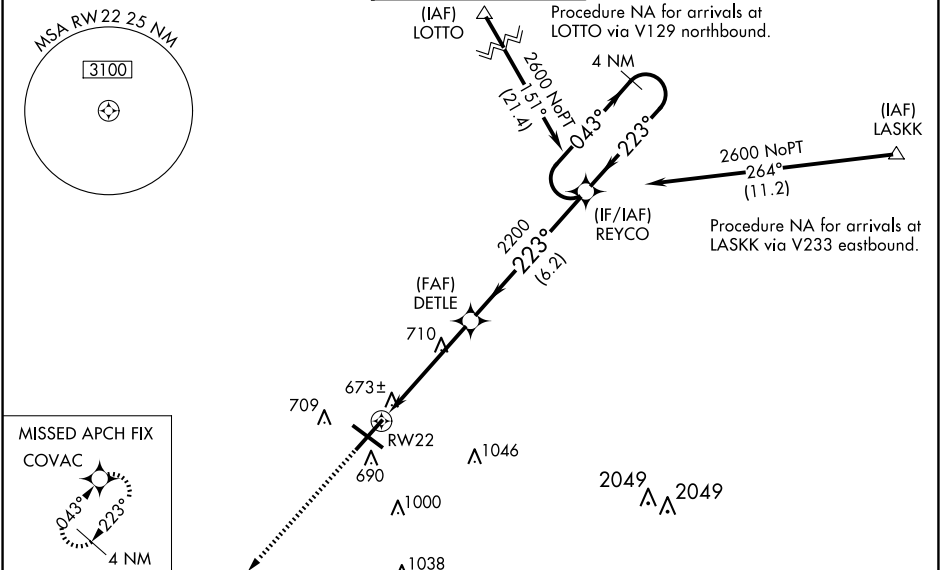


WAAS CH 81809 W22A	APP CRS 223°	Rwy Idg TDZE 598 Apt Elev 598	8001
--	------------------------	---	-------------

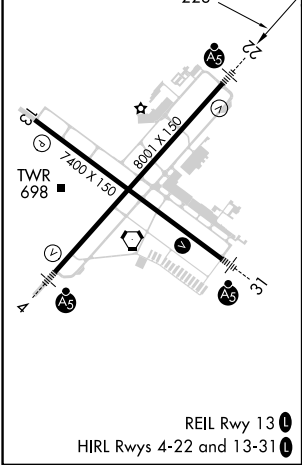
RNAV (GPS) RWY 22
ABRAHAM LINCOLN CAPITAL (SPI)

RNP APCH - GPS.		<div>MALSR</div> <div></div>	MISSED APPROACH: Climb to 2700 direct COVAC and hold.
<div><div></div><div>ASR</div></div>	<p>For uncompensated Baro-VNAV systems, LNAV/VNAV NA below -16°C or above 54°C. When local altimeter not received, use Lincoln altimeter setting: increase LPV DA to 942 feet and all visibilities ½ SM, LNAV/VNAV DA to 1108 feet and all visibilities ½ SM; increase all MDAs 60 feet and visibility LNAV and Circling Cat C/D ¼ SM. Baro-VNAV and VDP NA when using Lincoln altimeter setting. For inop ALS, increase LPV all Cats visibility to ¾ SM. For inop ALS when using Lincoln altimeter setting, increase LPV all Cats visibility to 1 SM, increase LNAV/VNAV all Cats visibility to 1 ½ SM.</p>		

ATIS 127.65 270.1	SAINT LOUIS APP CON ★ 126.15 323.0	SPRINGFIELD TOWER ★ 121.3 (CTAF) 0 257.8	GND CON 121.9 348.6	CLNC DEL 121.7	UNICOM 122.95
-----------------------------	--	--	-------------------------------	--------------------------	-------------------------



ELEV 598	D	TDZE 598
----------	----------	----------

		2700 COVAC		REYCO 4 NM Holding Pattern	
RW22		DETLE		2600	
1 NM to RW22		2200		GP 3.00° TCH 54	
1 NM		3.8 NM		6.2 NM	
CATEGORY	A	B	C	D	
LPV DA	884-½		286 (300-½)		
LNAV/VNAV DA	1050-¾		452 (500-¾)		
LNAV MDA	980-½		382 (400-½)		
C CIRCLING	1040-1¼	1100-1¼	1360-2¼	1380-2½	
	442 (500-1¼)	502 (600-1¼)	762 (800-2¼)	782 (800-2½)	