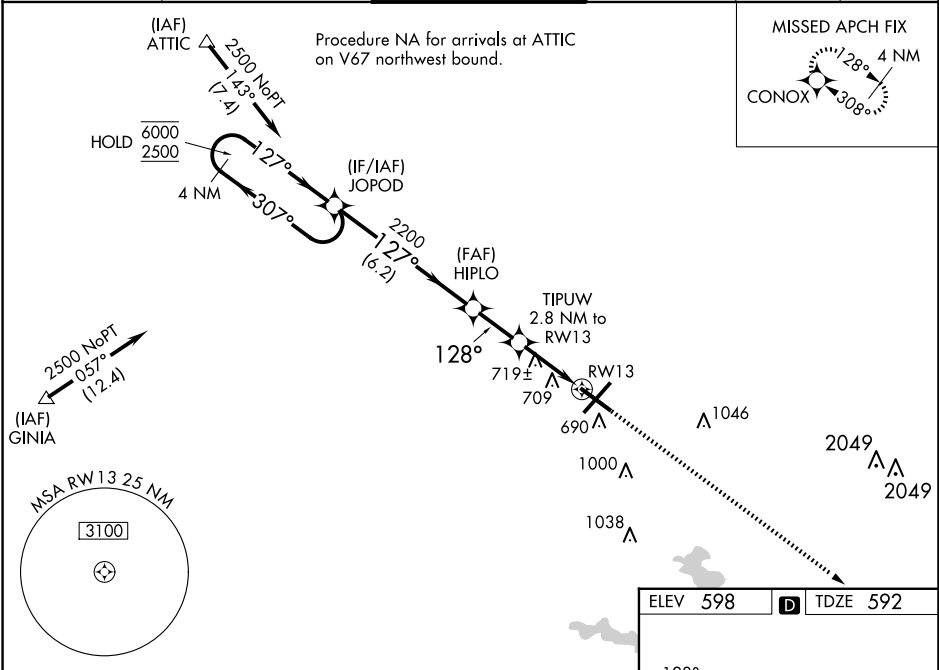


WAAS CH 99616 W13A	APP CRS 128°	Rwy Idg TDZE Apt Elev	7217 592 598
--	------------------------	-----------------------------	---

RNAV (GPS) RWY 13
ABRAHAM LINCOLN CAPITAL (SPI)

RNP APCH - GPS.	Baro-VNAV and VDP NA when using Lincoln altimeter setting. For uncompensated Baro-VNAV systems, LNAV/VNAV NA below -16°C or above 54°C. When local altimeter setting not received, use Lincoln altimeter setting: increase LPV DA to 932 feet and all visibilities 1/8 SM; increase LNAV/VNAV DA to 1068 feet and all visibilities 1/4 SM; increase all MDAs 60 feet and LNAV visibility Cat C/D 1/4 SM, and Circling visibility Cat C/D 1/4 SM. Rwy 13 helicopter visibility reduction below 3/4 SM NA.	MISSED APPROACH: Climb to 3100 direct CONOX and hold.
-----------------	--	--

ATIS 127.65 270.1	SAINT LOUIS APP CON * 126.15 323.0	SPRINGFIELD TOWER * 121.3 (CTAF) 257.8	GND CON 121.9 348.6	CLNC DEL 121.7	UNICOM 122.95
-----------------------------	--	--	-------------------------------	--------------------------	-------------------------



4 NM Holding Pattern	JOPOD	3100 CONOX
6000 2500	307° 127°	2200 1520
GP 3.00° TCH 50	6.2 NM	2 NM
CATEGORY	A	B
LPV DA	875-7/8	283 (300-7/8)
LNAV/VNAV DA	1011-1 1/8	419 (500-1 1/8)
LNAV MDA	980-1 388 (400-1)	980-1 1/8 388 (400-1 1/8)
CIRCLING	1040-1 442 (500-1)	1100-1 502 (600-1)

