

LOC I-CJF	APP CRS	Rwy Idg	7000
110.15	308°	TDZE	590
		Apt Elev	598

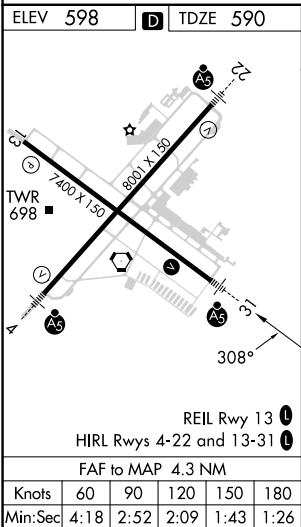
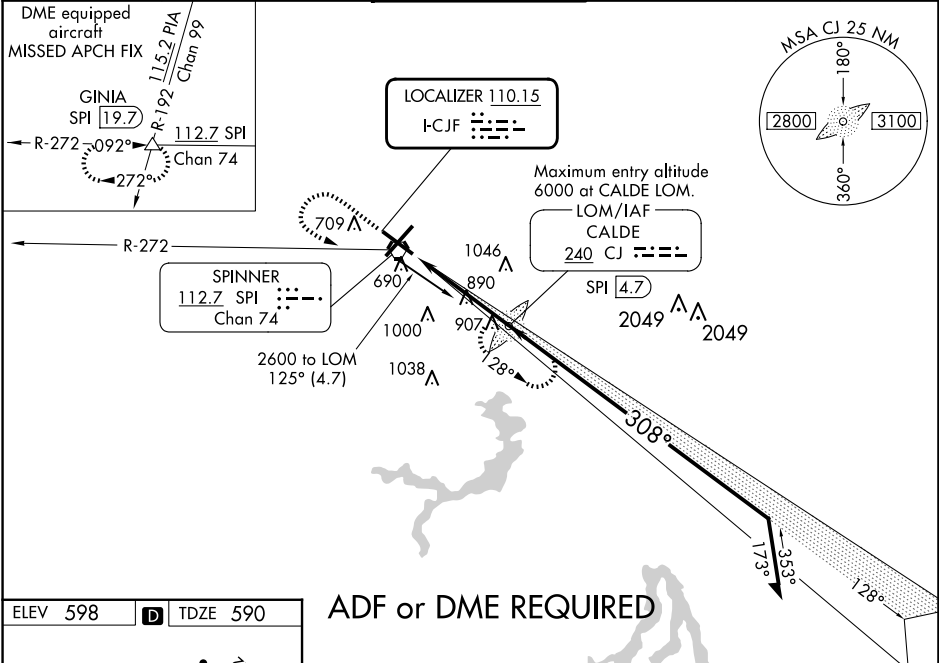
ILS or LOC RWY 31  
ABRAHAM LINCOLN CAPITAL (SPI)

**ADF or DME required.** When local altimeter setting not received, use Logan County altimeter setting: increase DA to 848 feet and all MDA 60 feet, increase Circling Cat C/D/E visibility ¼ SM. For inop MALSR, increase S-ILS-31 Cat E visibility to ¾ and S-LOC-31 Cat E visibility to 2¼. Autopilot coupled approach NA below 850.

**MALSR**

**MISSED APPROACH:** Climb to 1700 then climbing left turn to 3100 direct CALDE LOM and hold. (DME equipped aircraft climb to 1700, then climbing left turn to 3200 via SPI R-272 to GINIA INT/SPI 19.7 DME and hold.)

ATIS	SAINT LOUIS APP CON ★	SPRINGFIELD TOWER ★	GND CON	CLNC DEL	UNICOM
127.65 270.1	126.15 323.0	121.3 (CTAF) 257.8	121.9 348.6	121.7	122.95



ADF or DME REQUIRED

1700

3100

CJ

CJ LOM

SPI

4.7

6000

2014

128°

2600

308°

2100

GS 3.00°

TCH 55

4.3 NM

CATEGORY

A

B

C

D

E

S-ILS 31

790-½ 200 (200-½)

S-LOC 31

1200-½ 610 (700-½)

1200-1¼ 610 (700-1¼)

1200-1½ 610 (700-1½)

1200-1¾ 610 (700-1¾)

CIRCLING

1200-1 602 (700-1)

1360-2¼ 762 (800-2¼)

1380-2½ 782 (800-2½)

1380-2¾ 782 (800-2¾)

EC-3, 07 AUG 2025 to 04 SEP 2025

EC-3, 07 AUG 2025 to 04 SEP 2025