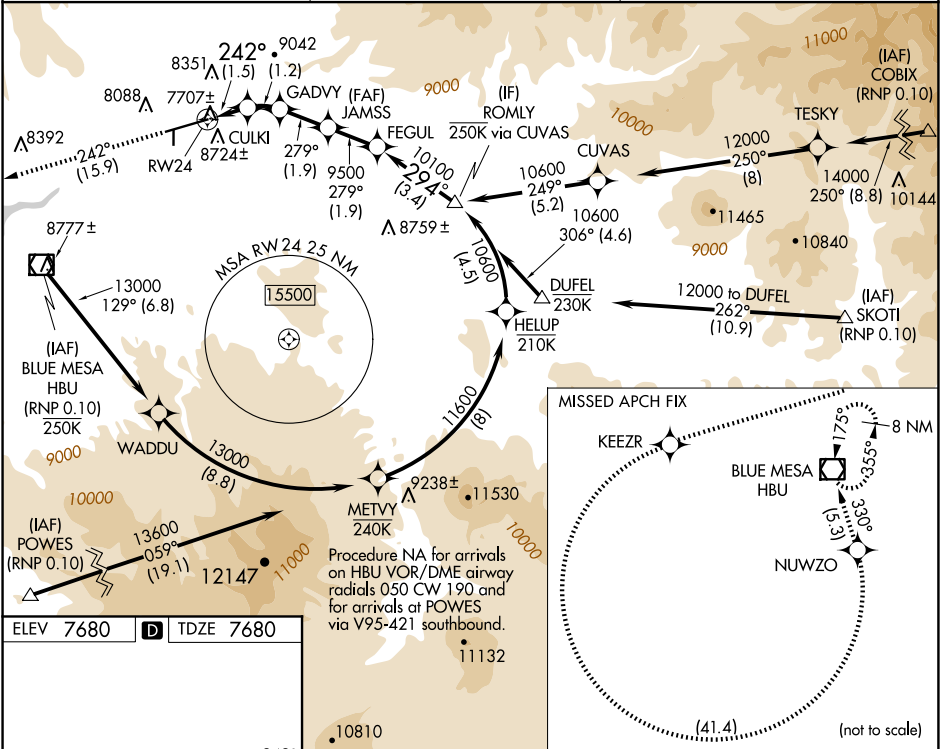


APP CRS	Rwy Ldg	9400
242°	TDZE	7680
	Apt Elev	7680

RNAV (RNP) RWY 24
GUNNISON-CRESTED BUTTE RGNL (GUC)

RNP AR APCH - GPS, RF, min RNP 0.10. Authorization required.		MISSED APPROACH: Climb to 14000 on track 242° to KEEZR, and left turn to NUWZO, and on track 330° to HBU VOR/DME and hold. Missed approach requires minimum climb of 425 feet per NM to 9000.
▼	When local altimeter setting not received, procedure NA.	
❄ -25°C	Procedure NA for aircraft with wingspan greater than 136 feet. For uncompensated Baro-VNAV systems, procedure NA below -29°C or above 24°C.	

AWOS-3PT 135.075	DENVER CENTER 124.5 350.25	UNICOM 122.7 (CTAF) 0
---------------------	-------------------------------	--------------------------



ELEV 7680	TDZE 7680	Procedure NA for arrivals on HBU VOR/DME airway radials 050 CW 190 and for arrivals at POWES via V95-421 southbound.	
		14000 tr 242°	KEEZR
		NUWZO	VGSI and RNAV glidepath not coincident (VGSI Angle 3.60/TCH 71).
		JAMSS	FEGUL
		CULKI	GADVY
		9500	279°
		10100	294°
		10600	Procedure Turn NA GP 3.60° TCH 65
		1.5 NM	1.2 NM
		1.9 NM	1.9 NM
		3.4 NM	
CATEGORY		A	B
RNP 0.10 DA		8029-1	349 (400-1)
			NA
AUTHORIZATION REQUIRED			

SW-1, 07 AUG 2025 to 04 SEP 2025

SW-1, 07 AUG 2025 to 04 SEP 2025