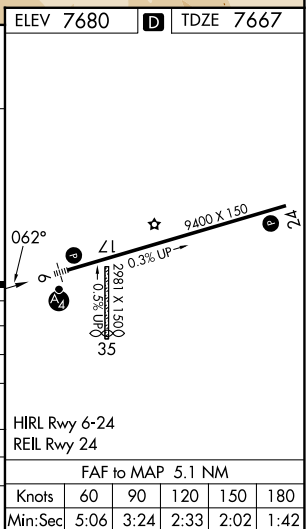
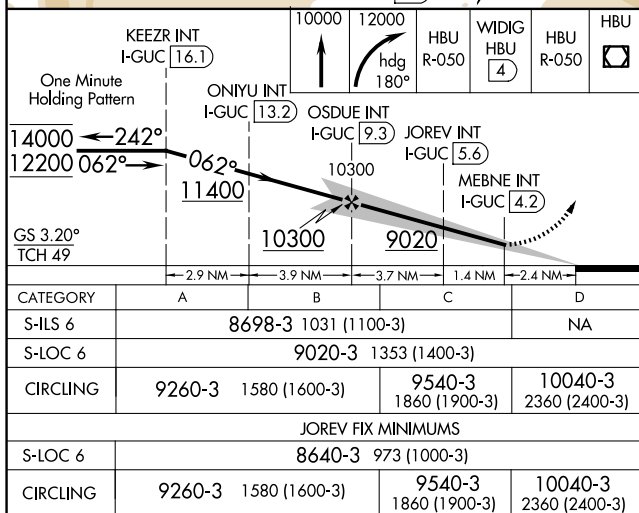
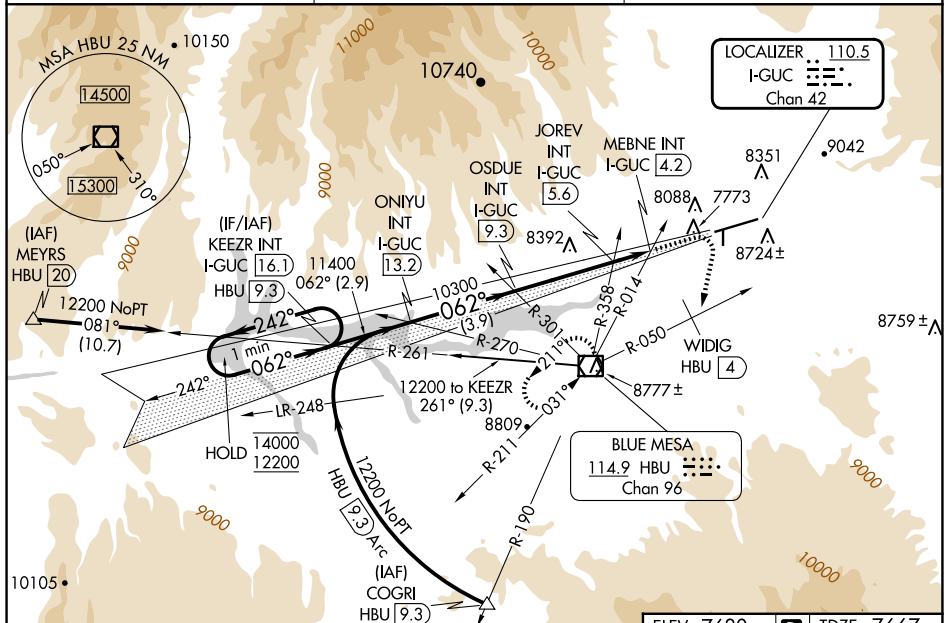


ILS or LOC RWY 6
GUNNISON-CRESTED BUTTE RGNL (GUC)

MISSED APPROACH: Climb to 10000 then climbing right turn to 12000 on heading 180° and HBU VOR/DME R-050 to WIDIG/HBU 4 DME continue on HBU VOR/DME R-050 to HBU VOR/DME and hold.

T Rwy 6 helicopter visibility reduction below $\frac{3}{4}$ SM NA.
A Inop table does not apply. Procedure NA when airport
 closed except by prior arrangement.
❄ -25°C Circling NA to Rwy 17 and 35.

UNICOM
122.7 (CTAF) **L**



SW-1, 07 AUG 2025 to 04 SEP 2025