

WAAS CH 45613 W23A	APP CRS 234°	Rwy Ldg 10000 TDZE 409 Apt Elev 435
--	------------------------	--

RNAV (GPS) Y RWY 23R

RALEIGH-DURHAM INTL (RDU)

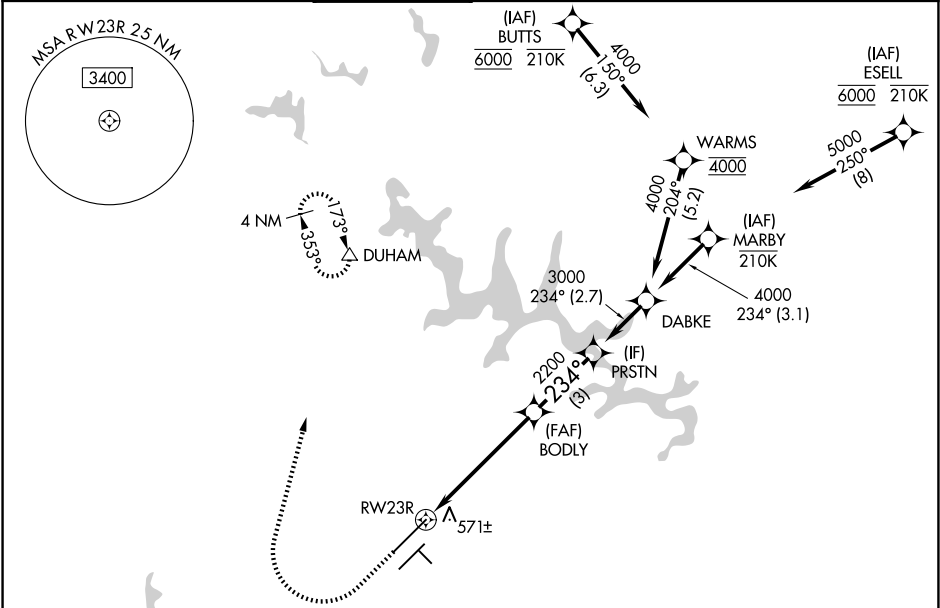
RNP APCH - GPS

Simultaneous approach authorized. LNAV procedure NA during simultaneous operations.
Use of FD or AP providing RNAV track guidance required during simultaneous operations.
For uncompensated Baro-VNAV systems, LNAV/VNAV NA below -12°C or above 54°C.
For inop ALS, increase LNAV/VNAV all Cats visibility to RVR 6000 and LNAV Cat C/D visibility to 1½ NM.

ALSF-2

MISSED APPROACH: Climb to 1000 then climbing right turn to 2200 direct DUHAM and hold.

D-ATIS 123.8	RALEIGH APP CON 127.675 307.9	RALEIGH TOWER 127.45 257.8	GND CON 121.9 348.6	CINC DEL 120.1	CPDLC
------------------------	---	--------------------------------------	-------------------------------	--------------------------	-------



ELEV 435	D	TDZE 409
<div><div><div>234°</div><div>23R</div><div>1000 X 150</div><div>TWR</div><div>1350 X 150</div><div>1350 X 100</div><div>REIL Rwy 32</div><div>MIRL Rwy 14-32</div><div>HIRL Rwy 5L-23R and 5R-23L</div><div>TDZ/CL Rwy 5L, 23L, and 23R</div></div><div><div>1000</div><div>2200</div><div>DUHAM</div><div>VGSI and RNAV glidepath not coincident (VGSI Angle 3.00/TCH 69)</div><div><div>BODY</div><div>PRSTN</div><div>DABKE</div><div>MARBY</div><div>5000</div><div>GP 3.00° TCH 55</div></div><div><div>1.6 NM</div><div>3.9 NM</div><div>3 NM</div><div>2.7 NM</div><div>3.1 NM</div></div></div></div>		