

WAAS
CH **65713**
W23B

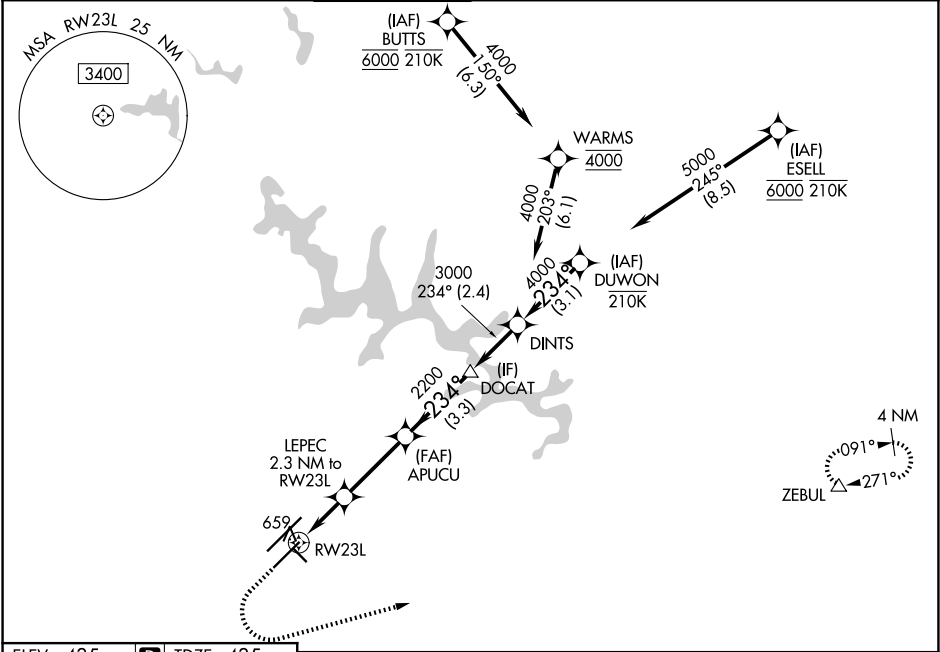
APP CRS
234°

Rwy Ldg
TDZE **435**
Apt Elev **435**

RNAV (GPS) Y RWY 23L

RALEIGH-DURHAM INTL (RDU)

RNP APCH-GPS.				MALSR	MISSED APPROACH: Climb to 1100 then climbing left turn to 2600 direct ZEBUL and hold.
<div><div>Simultaneous approach authorized. LNAV procedure NA during simultaneous operations. For uncompensated Baro-VNAV systems, LNAV/VNAV NA below -1.2°C or above 54°C. Use of FD or AP required during simultaneous operations. For inop ALS, increase LNAV Cat C/D visibility to 1 3/8 SM.</div></div>				<div><div><div><div></div><div></div><div></div></div></div></div>	
D-ATIS 123.8	RALEIGH APP CON 127.675 307.9	RALEIGH TOWER 127.45 257.8	GND CON 121.9 348.6	CINC DEL 120.1	CPDLC



ELEV 435	<div><div></div><div>D</div></div>	TDZE 435	<div><div>1100</div><div>2600</div><div>ZEBUL</div><div>△</div></div>			
<div><div><div><div><div></div><div>23R</div><div>10000 X 150</div><div>0.8% UP</div><div>722</div><div>234°</div><div>7500 X 150</div><div>0.6% UP</div><div>3570 X 100</div><div>5</div></div><div><div></div><div>TWR</div><div>AS</div></div><div><div></div><div>REIL Rwy 32</div><div>MIRL Rwy 14-32</div><div>HIRL Rwy 5R-23L and 5L-23R</div><div>TDZ/CL Rwy 5L, 23R, and 23L</div></div></div></div></div>			<div><div><div><div><div></div><div>LEPEC</div><div>2.3 NM to RW23L</div><div>*1.4 NM to RW23L</div><div>RW23L</div><div>1200*</div><div>APUCU</div><div>2200</div><div>DOCAT</div><div>DINTS</div><div>DUWON</div><div>5000</div><div>234°</div><div>4000</div><div>3000</div><div>GP 3.00°</div><div>TCH 56</div></div></div></div></div>			
			<div><div><div><div></div><div>1.4 NM</div><div>0.9 NM</div><div>3.1 NM</div><div>3.3 NM</div><div>2.4 NM</div><div>3.1 NM</div></div></div></div>			
CATEGORY			A	B	C	D
LPV DA			635/18 200 (200-1/2)			
LNAV/VNAV DA			820/35 385 (400-5/6)			
LNAV MDA			920/24 485 (500-1/2)	920/50 485 (500-1)		
CIRCLING			960-1 525 (600-1)	1020-1 1/2 585 (600-1 1/2)	1180-2 1/2 745 (800-2 1/2)	