

APP CRS

Rwy Ldg

7500

054°

TDZE

420

Apt Elev

435

RNAV (RNP) Z RWY 5R

RALEIGH-DURHAM INTL (RDU)

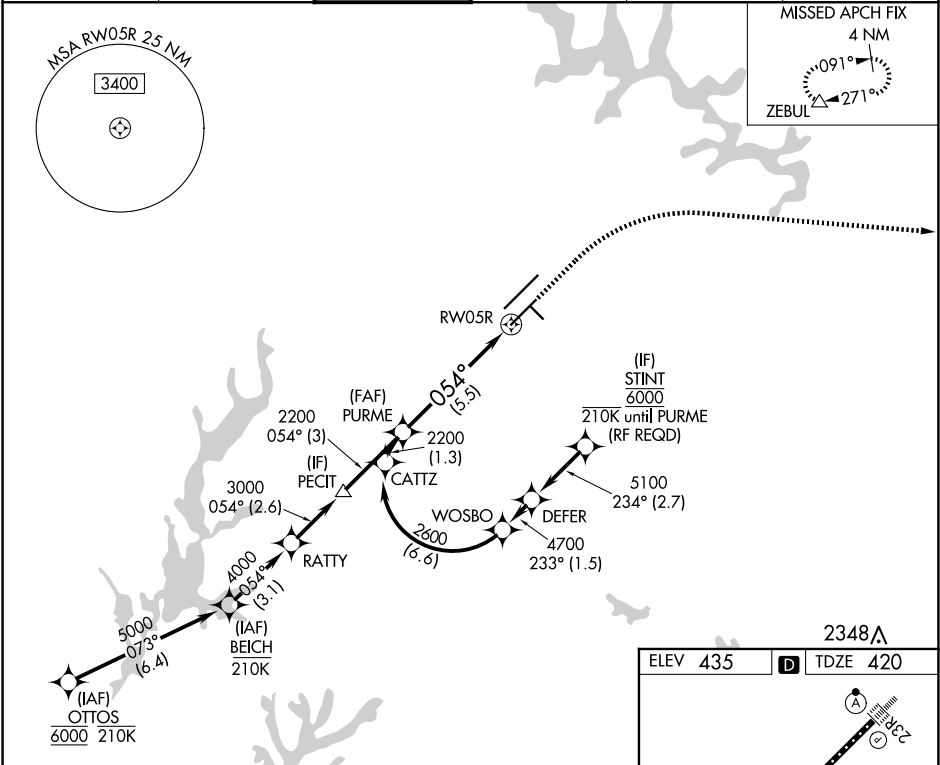
▼

For uncompensated Baro-VNAV systems, procedure NA below -12°C or above 54°C. For inop ALS, increase RNP 0.30 all Cats visibility to RVR 4500. Simultaneous approach authorized, except for arrivals at STINT.

MALSR

MISSED APPROACH: Climb to 1000 then climbing right turn to 2600 direct ZEBUL and hold.

D-ATIS	RALEIGH APP CON	RALEIGH TOWER	GND CON	CLNC DEL	CPDLC
123.8	127.675 307.9	127.45 257.8	121.9 348.6	120.1	



VGSI and RNAV glidepath not coincident (VGSI Angle 3.00/TCH 62).

1000

2600

ZEBUL

PURME

2200

2200

054°

RW05R

GP 3.00°

TCH 56

5.5 NM

See planview for multiple IF locations.

ELEV 435

TDZE 420

REIL Rwy 32

MIRL Rwy 14-32

HIRL Rwy 5R-23L and 5L-23R

TDZ/CL Rwy 5L, 23L, and 23R

CATEGORY	A	B	C	D
RNP 0.30 DA	721/24 301 (400-½)			

AUTHORIZATION REQUIRED

SE-2, 07 AUG 2025 to 04 SEP 2025

SE-2, 07 AUG 2025 to 04 SEP 2025