

| | |
|------------------------|---|
| APP CRS 234° | Rwy Ldg 7500 TDZE 435 Apt Elev 435 |
|------------------------|---|

RNAV (RNP) Z RWY 23L

RALEIGH-DURHAM INTL (RDU)

RNP AR APCH-GPS.

T For uncompensated Baro-VNAV systems, procedure NA below -12°C or above 54°C. Simultaneous approach authorized, except for arrivals at KENCH. For inop ALS, increase RNP 0.10 all Cats visibility to RVR 5500.

MALSR



MISSED APPROACH: Climb to 1100 then climbing left turn to 2600 direct ZEBUL and hold.

D-ATIS
123.8

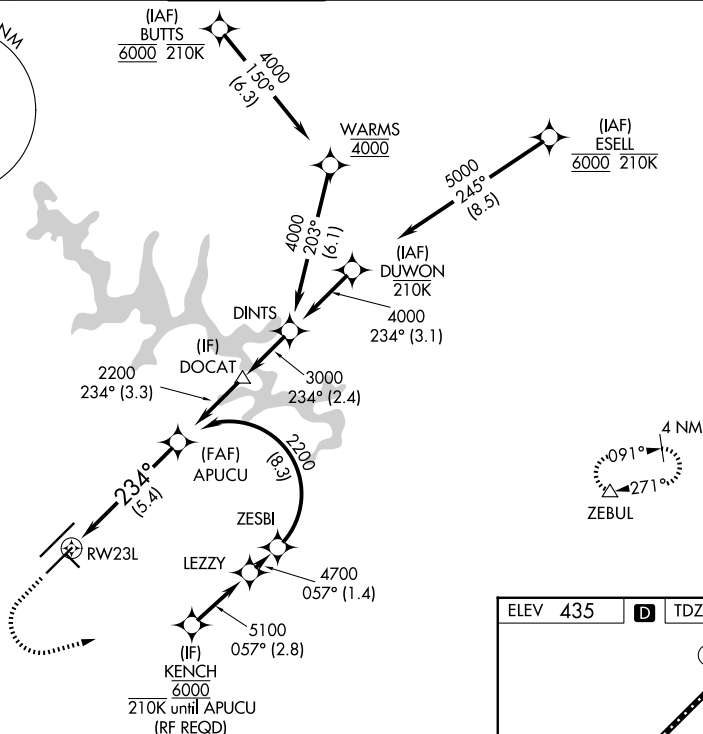
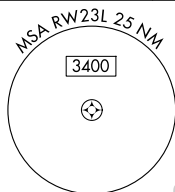
RALEIGH APP CON
127.675 307.9




RALEIGH TOWER
127.45 257.8

GND CON
121.9 348.6

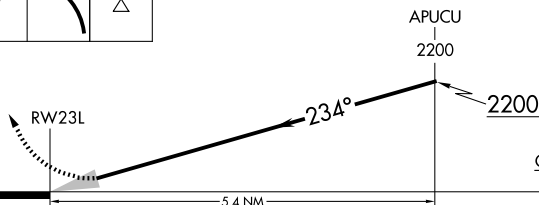
CLNC DE
120.1

CPDLC



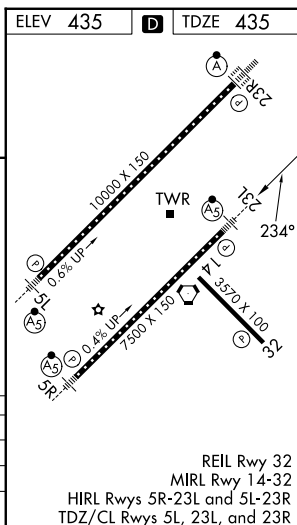
| | | |
|---|---|---|
| 1100 | 2600 | ZEBUL |
|  |  |  |

See planview for multiple IF locations.



| CATEGORY | A | B | C | D |
|-------------|---|--------|-------------|---|
| RNP 0.10 DA | | 776/30 | 341 (400-%) | |
| RNP 0.30 DA | | 826/35 | 391 (400-%) | |

AUTHORIZATION REQUIRED



RALEIGH/DURHAM, NORTH CAROLINA

Amdt 3 25FEB21

RALEIGH-DURHAM INTL (RDU)

35°53'N-78°47'W

RNAV (RNP) Z RWY 23L