

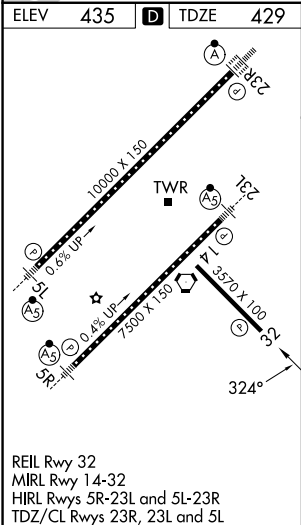
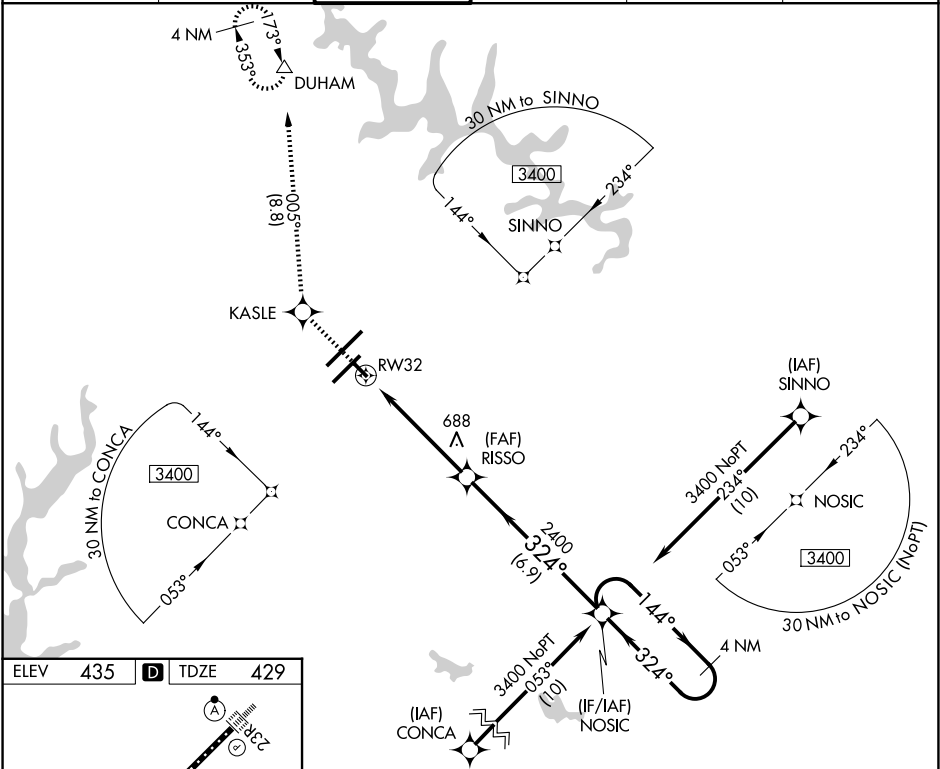
APP CRS	Rwy Ldg	3570
324°	TDZE	429
	Apt Elev	435

RNAV (GPS) RWY 32

RALEIGH-DURHAM INTL (RDU)

RNP APCH.	MISSED APPROACH: Climb to 2200 direct KASLE and on track 005° to DUHAM and hold.
Rwy 32 helicopter visibility reduction below ¾ SM NA. Baro-VNAV NA below -15°C (5°F) or above 48°C (118°F).	

D-ATIS	RALEIGH APP CON	RALEIGH TOWER	GND CON	CLNC DEL	CPDLC
123.8	127.675 307.9	127.45 257.8	121.9 348.6	120.1	



2200	KASLE	tr 005°	DUHAM
*LNAV only:			
RW32			
1.3 NM			
3.8 NM			
6.9 NM			
CATEGORY	A	B	C
LNAV/VNAV	DA	820-1¼	391 (400-1¼)
LNAV/MDA	1000-1	571 (600-1)	1000-1½
CIRCLING	1000-1¼	565 (600-1¼)	1040-1¾