
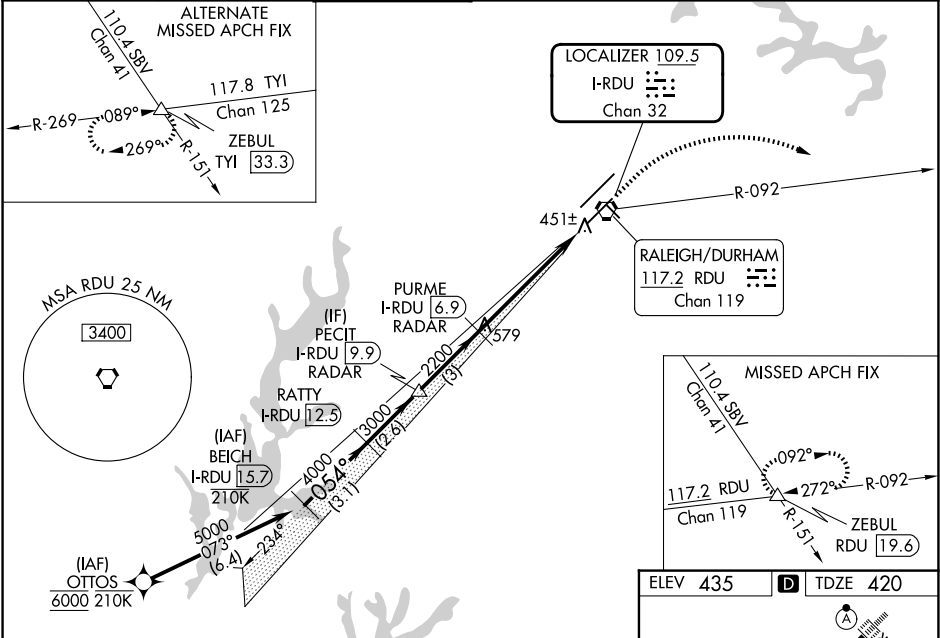


LOC/DME I-RDU <b>109.5</b> Chan <b>32</b>	APP CRS <b>054°</b>	Rwy Ldg <b>7500</b> TDZE <b>420</b> Apt Elev <b>435</b>
---	------------------------	---

ILS RWY 5R (SA CAT I & II)

RALEIGH-DURHAM INTL (RDU)

RNAV 1-DME/DME/IRU or GPS or RADAR required for procedure entry.				<div>MALSR</div> <div></div>	MISSED APPROACH: Climb to 1000 then climbing right turn to 2600 on heading 130° and on RDU VORTAC R-092 to ZEBUL INT/RDU 19.6 DME and hold.	
<div><div>Simultaneous approach authorized.</div><div>SA CAT I: Requires specific OPSPEC, MSPEC or LOA approval and use of HUD to DH.</div><div>SA CAT II: Reduced lighting: Requires specific OPSPEC, MSPEC or LOA approval and use of autoland or HUD to touchdown.</div></div>						
D-ATIS 123.8	RALEIGH APP CON 127.675 307.9	RALEIGH TOWER 127.45 257.8	GND CON 121.9 348.6	CLNC DEL 120.1	CPDLC	



VGSI and ILS glidepath not coincident (VGSI Angle 3.00/TCH 62).		1000	2600	RDU R-092	ZEBUL
BEICH I-RDU 15.7		↑	hdg 130°		△
RATTY I-RDU 12.5		Use I-RDU DME when on the localizer course.			
PECIT I-RDU 9.9					
PURME I-RDU 6.9					
5000 054°					
4000					
3000					
2200					
GS 3.00° TCH 56					
3.1 NM		2.6 NM	3 NM	5.5 NM	1025'
CATEGORY	A	B	C	D	
S-ILS 5R	SA CAT I	RA 230/14	150	DA 570	
S-ILS 5R	SA CAT II	RA 183/12	100	DA 520	
SA CATEGORY I & II ILS SPECIAL AIRCREW & AIRCRAFT CERTIFICATION REQUIRED					