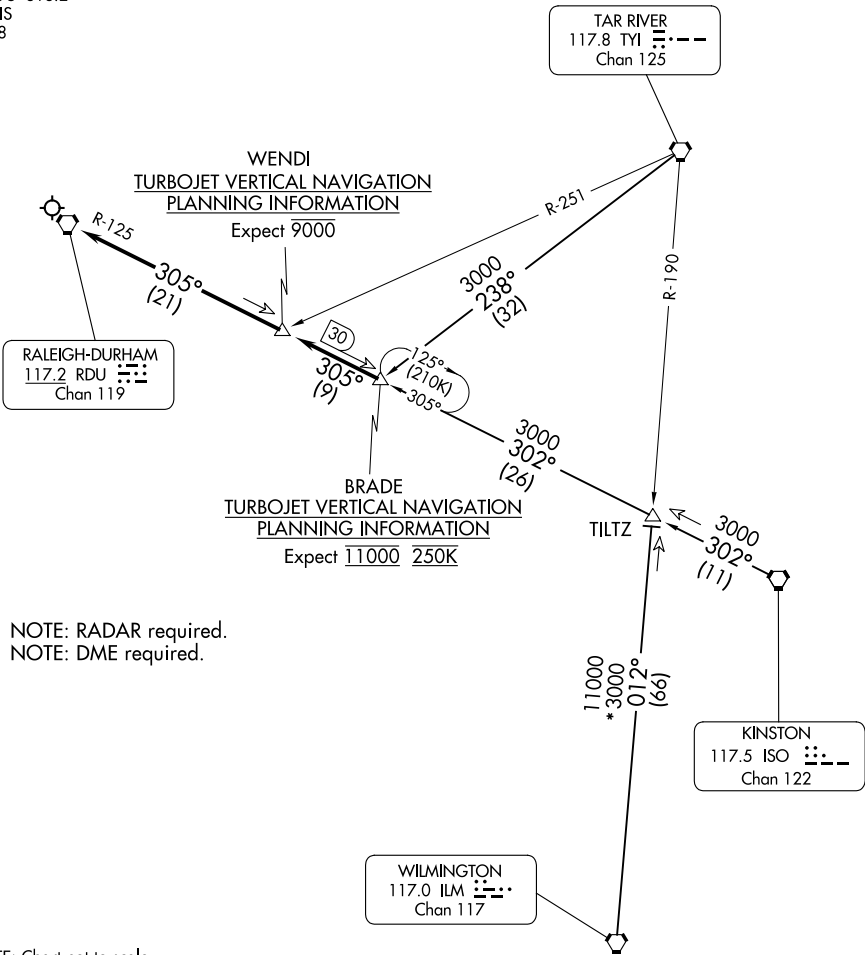


(BRADE.BRADE6) 24193  
BRADE SIX ARRIVAL

AL-516 (FAA)

RALEIGH-DURHAM INTL (RDU)  
RALEIGH/DURHAM, NORTH CAROLINA

RALEIGH APP CON  
124.95 318.2  
D-ATIS  
123.8



NOTE: RADAR required.  
NOTE: DME required.

NOTE: Chart not to scale.

ARRIVAL ROUTE DESCRIPTION

KINSTON TRANSITION (ISO.BRADE6): From over ISO VORTAC on ISO R-302 to BRADE, thence . . . .  
TAR RIVER TRANSITION (TYI.BRADE6): From over TYI VORTAC on TYI R-238 to BRADE, thence . . . .  
WILMINGTON TRANSITION (ILM.BRADE6): From over ILM VORTAC on ILM R-012 to TILTZ, then on ISO R-302 to BRADE, thence . . . .  
  
. . . . from over BRADE on RDU R-125 to RDU VORTAC. Expect RADAR vectors to final approach course after WENDI.

BRADE SIX ARRIVAL  
(BRADE.BRADE6) 24MAY18

RALEIGH/DURHAM, NORTH CAROLINA  
RALEIGH-DURHAM INTL (RDU)

SE-2, 07 AUG 2025 to 04 SEP 2025

SE-2, 07 AUG 2025 to 04 SEP 2025