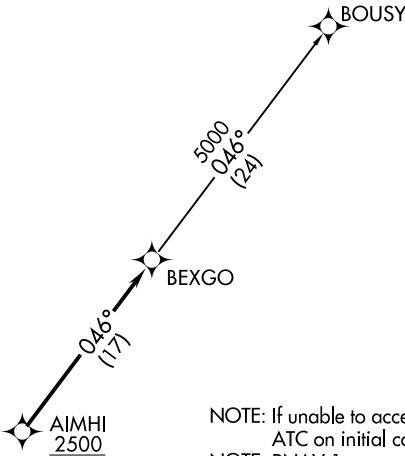


RALEIGH DEP CON
132.35 256.9
D-ATIS
123.8
CLNC DEL
120.1
CPDLC
GND CON
121.9 348.6
RALEIGH TOWER
127.45 257.8

TOP ALTITUDE:
(JETS) 6000
(PROPS) ASSIGNED BY ATC



NOTE: If unable to accept climb rate, advise ATC on initial contact.
NOTE: RNAV 1.
NOTE: DME/DME/IRU or GPS required.
NOTE: RADAR required.



TAKEOFF MINIMUMS

Rwys 5L/R: Standard.
Rwy 14: Standard with minimum climb of 310' per NM to 1000.
Rwy 23L: Standard with minimum climb of 250' per NM to 2300.
Rwy 23R: Standard with minimum climb of 240' per NM to 2100.
Rwy 32: 300-1.

NOTE: Chart not to scale.



DEPARTURE ROUTE DESCRIPTION

TAKEOFF RUNWAYS 5L/R, 14, 23L/R, 32: Climb on assigned heading for RADAR vectors to cross AIMHI at or above 2500, thence. . . .

. . . .on track 046° to BEXGO. Turbojets maintain 6000, propellers maintain altitude assigned by ATC. Expect clearance to filed altitude within ten minutes after departure.

BOUSY TRANSITION (BEXGO5.BOUSY)