

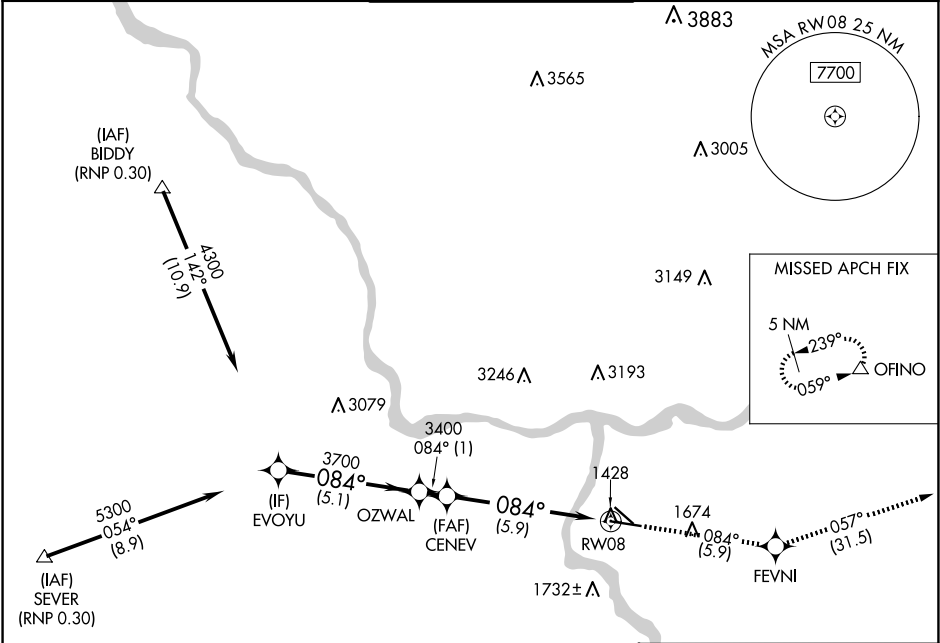
APP CRS	Rwy Idg	6511
084°	TDZE	1440
	Apt Elev	1442

RNAV (RNP) Z RWY 8

LEWISTON/NEZ PERCE COUNTY (LWS)

<div>▼ ▲</div>	GPS required. For uncompensated Baro-VNAV systems, procedure NA below -16°C (3°F) or above 46°C (115°F). When VGSI inop, procedure NA at night.	MISSED APPROACH: Climb to 6000 via track 084° to FEVNI and via track 057° to OFINO and hold.
--------------------	---	--

ASOS 135.575	SEATTLE CENTER 123.95 290.55	LEWISTON TOWER ★ 119.4 (CTAF) 0 318.8	GND CON 121.9	UNICOM 122.95
-----------------	---------------------------------	--	------------------	------------------



ELEV 1442	TDZE 1440
-----------	-----------

