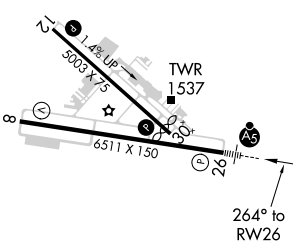

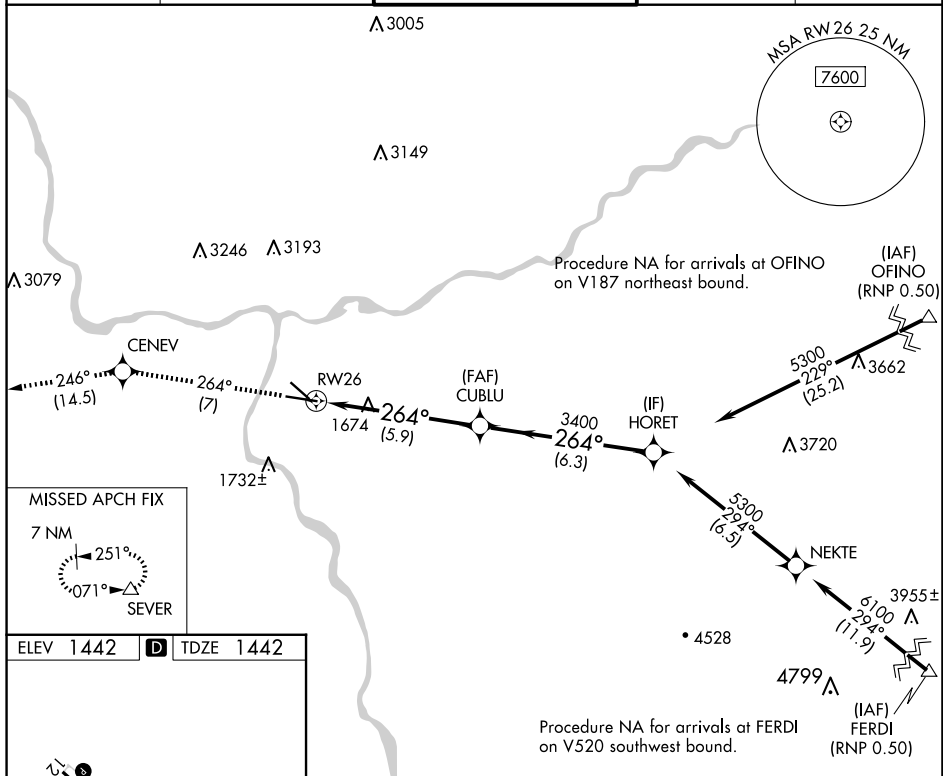


22027

RNAV (RNP) Z RWY 26
LEWISTON/NEZ PERCE COUNTY (LWS)

MISSED APPROACH: Climb to 7000 on track 264° to CENEV and on track 246° to SEVER and hold, continue climb-in-hold to 7000.

UNICOM
122.95

REIL Rwy 8 **L**
REIL Rwy 12
HIRL Rwy 8-26
MIRL Rwy 12-30

7000 ↑ tr 264°	CENEV ✦ tr 246°	SEVER △	VGSI and RNAV glidepath not coincident (VGSI Angle 3.00°/TCH 51).	
			GP 3.00° TCH 51	
CATEGORY	A	B	C	D
RNP 0.20 DA	1806-¾		364 (400-¾)	
RNP 0.30 DA	2003-1½		561 (600-1½)	
AUTHORIZATION REQUIRED				

LEWISTON, IDAHO
Orig-B 17AUG17

46°22'N-117°01'W

LEWISTON/NEZ PERCE COUNTY (LWS)
RNAV (RNP) Z RWY 26