

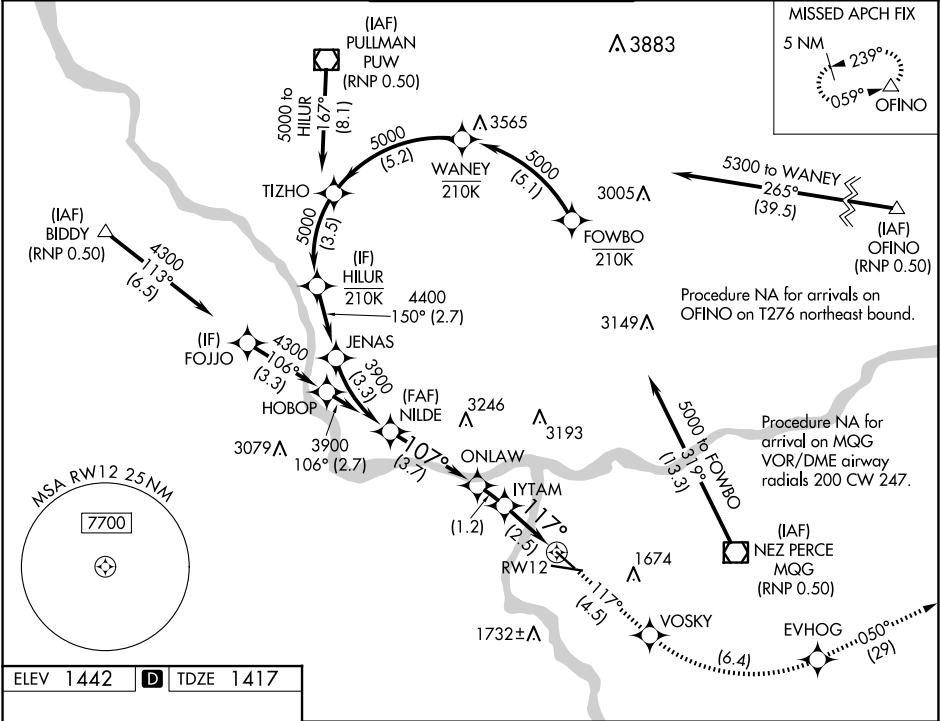
APP CRS	Rwy Idg	4750
117°	TDZE	1417
	Apt Elev	1442

RNAV (RNP) Z RWY 12

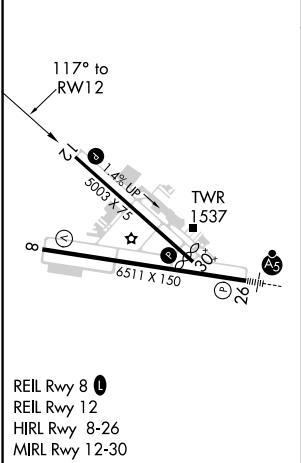
LEWISTON/NEZ PERCE COUNTY (LWS)

RNP AR APCH-GPS.	MISSED APPROACH: Climb to 6000 on track 117° to VOSKY then left turn 6000 to EVHOG and on track 050° to OFINO and hold. *Missed approach requires minium climb of 260 feet per NM to 3400.
▼ For uncompensated Baro-VNAV systems, procedure NA below -12°C or above 54°C.	

ASOS 135.575	SEATTLE CENTER 123.95 290.55	LEWISTON TOWER ★ 119.4 (CTAF) 0 318.8	GND CON 121.9	UNICOM 122.95
-----------------	---------------------------------	--	------------------	------------------



ELEV 1442	D	TDZE 1417
-----------	---	-----------



NILDE 3900	6000 VOSKY tr 117°	6000 EVHOG	tr 050° OFINO
ONLAW	IYTAM	VGSI and RNAV glidepath not coincident (VGSI Angle 3.00/TCH 40).	
GP 3.10° TCH 56	See Planview for multiple IF locations.	2659	2254
3.7 NM	1.2	2.5 NM	
CATEGORY	A	B	C
RNP 0.30 DA*	1685-7 $\frac{7}{8}$	268 (300-7 $\frac{7}{8}$)	
RNP 0.30 DA	1889-1 $\frac{1}{8}$	472 (500-1 $\frac{1}{8}$)	
AUTHORIZATION REQUIRED			

NW-1, 07 AUG 2025 to 04 SEP 2025

NW-1, 07 AUG 2025 to 04 SEP 2025