

APP CRS

Rwy Idg

297°

TDZE

1439

Apt Elev

1442

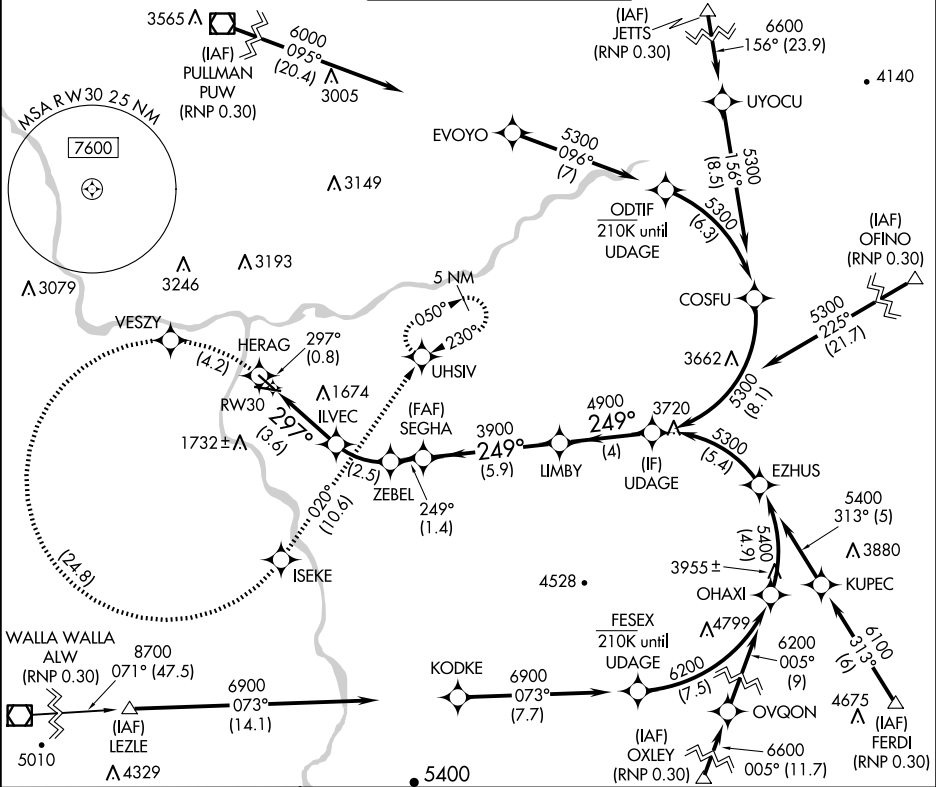
RNAV (RNP) RWY 30

Lewiston/Nez Perce County (LWS)

RNP AR APCH-GPS.

MISSED APPROACH: Climb to 6000 on track 297° to HERAG then left turn to VESZY then left turn to ISEKE and track 020° to UHSIV and hold.

ASOS 135.575	SEATTLE CENTER 123.95 290.55	LEWISTON TOWER ★ 119.4 (CTAF) 318.8	GND CON 121.9	UNICOM 122.95
-----------------	---------------------------------	--	------------------	------------------



ELEV 1442

TDZE 1439

6000

HERAG

VESZY

ISEKE

UHSIV

UDAGE

tr 297°

tr 020°

ILVEC

ZEBEL

SEGHA

LIMBY

2647

3448

3900

4900

297°

249°

249°

249°

5300

3.6 NM

2.5 NM

1.4 NM

5.9 NM

4 NM

CATEGORY

A

B

C

D

RNP 0.30 DA

1781-1

342 (400-1)

AUTHORIZATION REQUIRED