

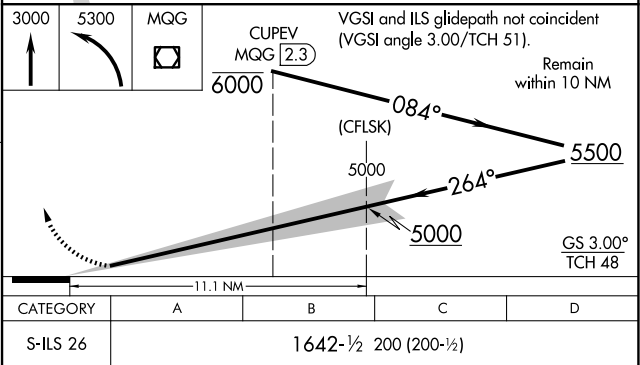
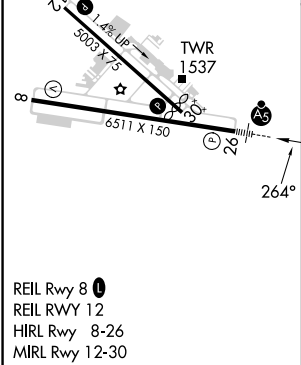
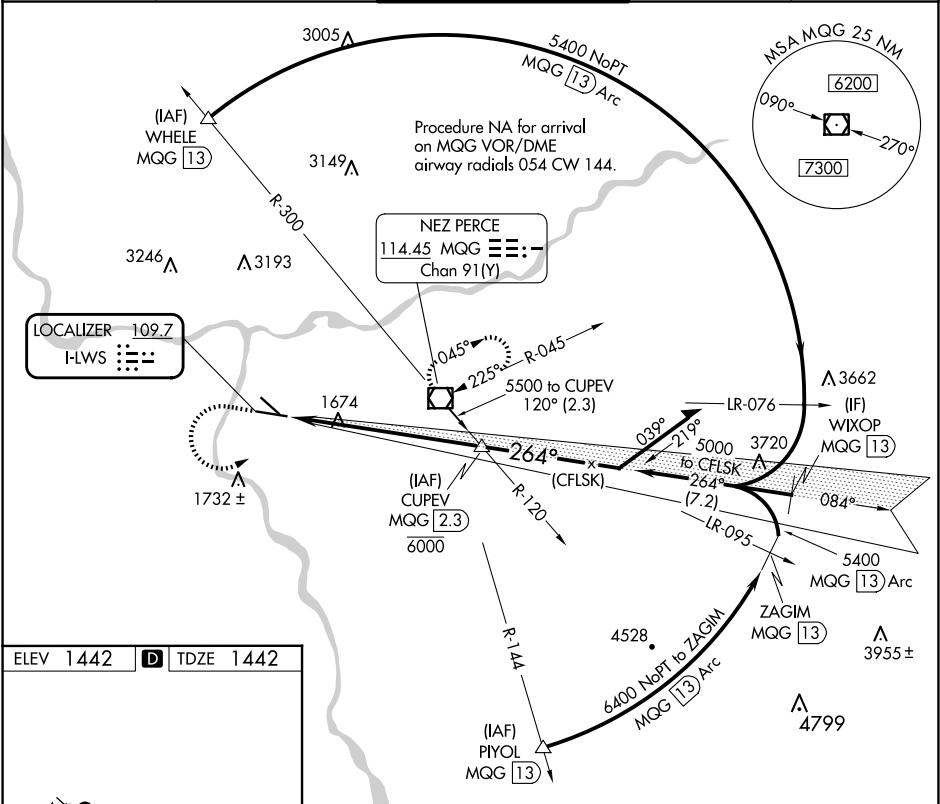
LOC I-LWS	APP CRS	Rwy Idg	6511
109.7	264°	TDZE	1442
		Apt Elev	1442

ILS RWY 26

LEWISTON/NEZ PERCE COUNTY (LWS)

<p><b>V</b> When local altimeter setting not received, procedure NA. Autopilot coupled approach NA below 2500.</p>	<p><b>MALSR</b></p>	<p><b>MISSED APPROACH:</b> Climb to 3000 then climbing left turn to 5300 direct MQG VOR/DME and hold, continue climb-in-hold to 5300.</p>
--	---------------------	---

ASOS 135.575	SEATTLE CENTER 123.95 290.55	LEWISTON TOWER ★ 119.4 (CTAF) 0 318.8	GND CON 121.9	UNICOM 122.95
-----------------	---------------------------------	--	------------------	------------------



NW-1, 07 AUG 2025 to 04 SEP 2025

NW-1, 07 AUG 2025 to 04 SEP 2025