

WAAS CH 90421 W36A	APP CRS 004°	Rwy Ldg 5497 TDZE 384 Apt Elev 422
--	------------------------	---

RNAV (GPS) RWY 36

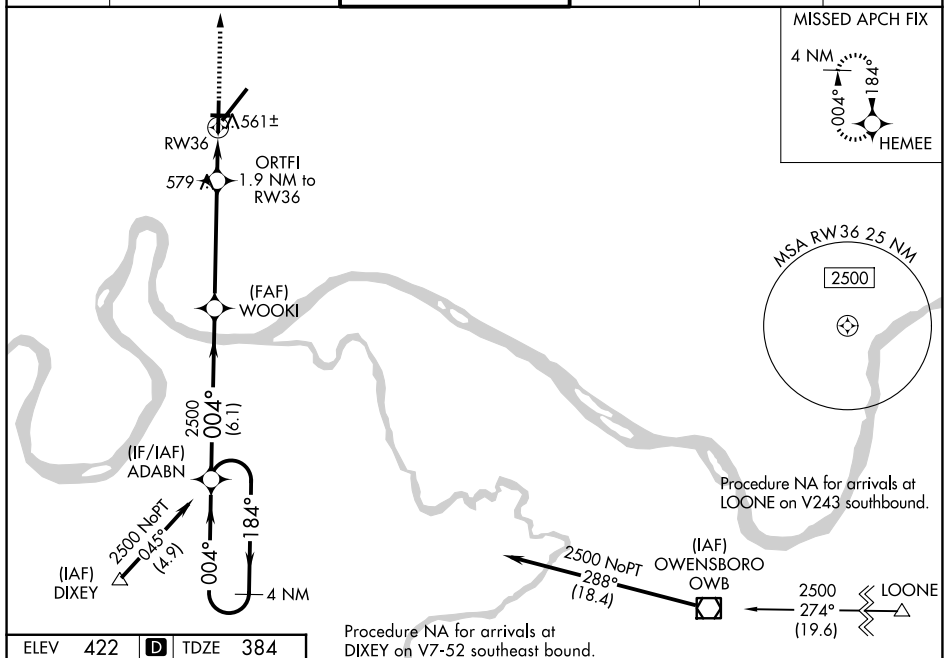
EVANSVILLE RGNL (E VV)

T
ASR

For uncompensated Baro-VNAV systems, LNAV/VNAV NA below -15°C (5°F) or above 54°C (130°F). DME/DME RNP-0.3 NA. Circling Rwy 9 NA at night. Helicopter visibility reduction below $\frac{3}{4}$ SM NA.

MISSED APPROACH: Climb to 2500 direct HEMEE and hold.

ATIS 120.2	EVANSVILLE APP CON ★ 124.025 290.9	EVANSVILLE TOWER ★ 118.7 (CTAF) 0 257.8	GND CON 121.9	CLNC DEL 126.6	UNICOM 122.95
----------------------	--	---	-------------------------	--------------------------	-------------------------



ELEV 422 **D** TDZE 384

HIRL Rwys 4-22 and 18-36 **L**

REIL Rwys 4, 18, and 36 **L**

MIRL Rwy 9-27 **L**

8L

6286 X 150

3497

X 75

TWR

8021 X 150

0.7% DOWN

☆

36

004°

VGS and RNAV glidepath not coincident
(VGS Angle 3.00/TCH 30).

4 NM Holding Pattern

ADABN

WOOKI 2500

ORTFI 1.9 NM to RW36

*1.3 NM to RW36

*1040

GP 3.00° TCH 55

184°

004°

2500

2500

6.1 NM

4.6 NM

0.6 NM

1.3

2500

HEMEE

*RNAV only

CATEGORY	A	B	C	D
LPV DA		634- $\frac{3}{4}$	250 (300- $\frac{3}{4}$)	
RNAV/ VNAV DA		891- $\frac{1}{4}$	507 (500- $\frac{1}{4}$)	
RNAV MDA	820-1	436 (500-1)	820-1 $\frac{1}{4}$	436 (500-1 $\frac{1}{4}$)
CIRCLING	920-1 498 (500-1)	1040-1 618 (700-1)	1040-1 $\frac{3}{4}$ 618 (700- $\frac{3}{4}$)	1040-2 618 (700-2)