

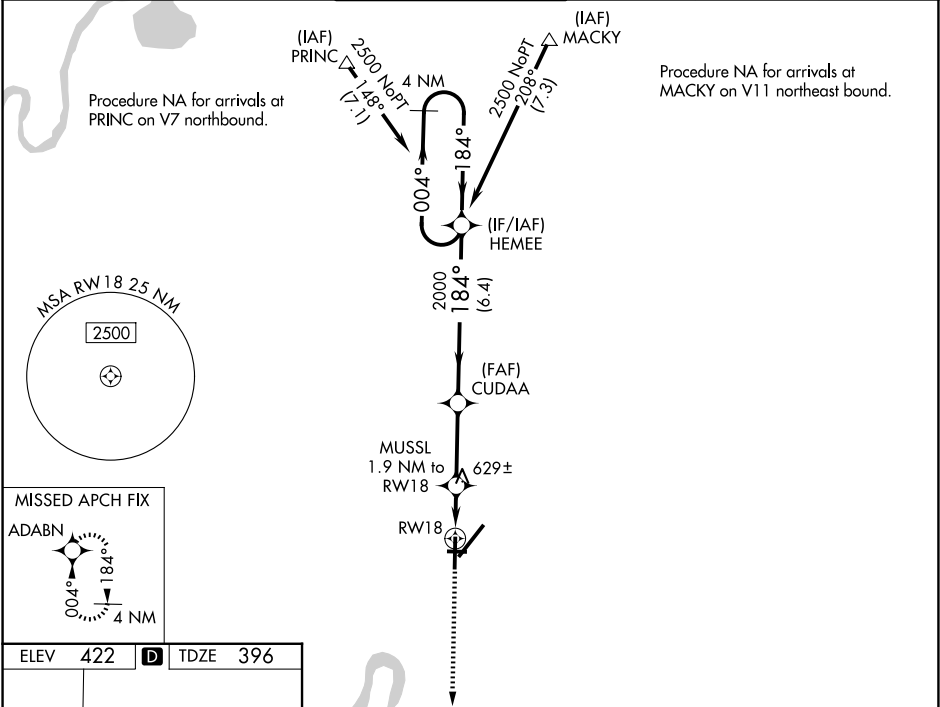
WAAS CH <b>50421</b> <b>W18A</b>	APP CRS <b>184°</b>	Rwy Ldg TDZE Apt Elev	<b>5498</b> <b>396</b> <b>422</b>
--	------------------------	-----------------------------	---

RNAV (GPS) RWY 18

EVANSVILLE RGNL (E V V)

ASR	For uncompensated Baro-VNAV systems, LNAV/VNAV NA below -15°C (5°F) or above 54°C (130°F). DME/DME RNP-0.3 NA. Circling Rwy 9 NA at night. Helicopter visibility reduction below ¾ SM NA.	MISSED APPROACH: Climb to 2500 direct ADABN and hold.
-----	---	---

ATIS <b>120.2</b>	EVANSVILLE APP CON ★ <b>124.025 290.9</b>	EVANSVILLE TOWER ★ <b>118.7</b> (CTAF) <b>0 257.8</b>	GND CON <b>121.9</b>	CLNC DEL <b>126.6</b>	UNICOM <b>122.95</b>
----------------------	--	--	-------------------------	--------------------------	-------------------------



<p>HIRL Rws 4-22 and 18-36</p> <p>REIL Rws 4, 18, and 36</p> <p>MIRL Rwy 9-27</p>	2500 ADABN VGSi and RNAV glidepath not coincident (VGSi Angle 3.00/TCH 49). 4 NM Holding Pattern			
	*LNAV only			
	MUSL 1.9 NM to RW18			
	*1.1 NM to RW18			
	*1060			
CATEGORY	A	B	C	D
LPV DA	596-¾ 200 (200-¾)			
LNAV/VNAV DA	931-1¾ 535 (600-1¾)			
LNAV MDA	880-1	484 (500-1)	880-1⅔	484 (500-1⅔)
CIRCLING	920-1 498 (500-1)	1040-1 618 (700-1)	1040-1¾ 618 (700-1¾)	1040-2 618 (700-2)