

ILS or LOC RWY 4  
EVANSVILLE RGNL (EVV)

**MISSED APPROACH:** Climb to 1500 then climbing left turn to 2500 direct PXV VORTAC and hold.

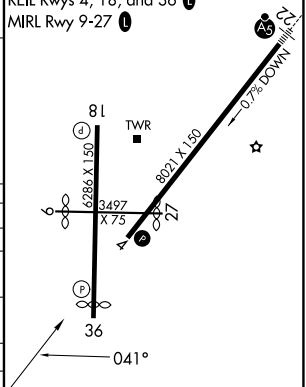
ALTERNATE MISSED APCH FIX

EC-2, 07 AUG 2025 to 04 SEP 2025

EC-2, 07 AUG 2025 to 04 SEP 2025



HIRL Rwys 4-22 and 18-36 **L**  
REIL Rwys 4, 18, and 36 **L**  
MIRL Rwy 9-27 **L**



FAF to MAP 4.9 NM

Knots	60	90	120	150	180
Min:Sec	4:54	3:16	2:27	1:58	1:38