

TACAN RWY 4

TACAN CVS Chan 53	APCH CRS 048°	Rwy ldg TDZE Arprt Elev	10,001 4284 4295
----------------------	------------------	----------------------------	------------------------

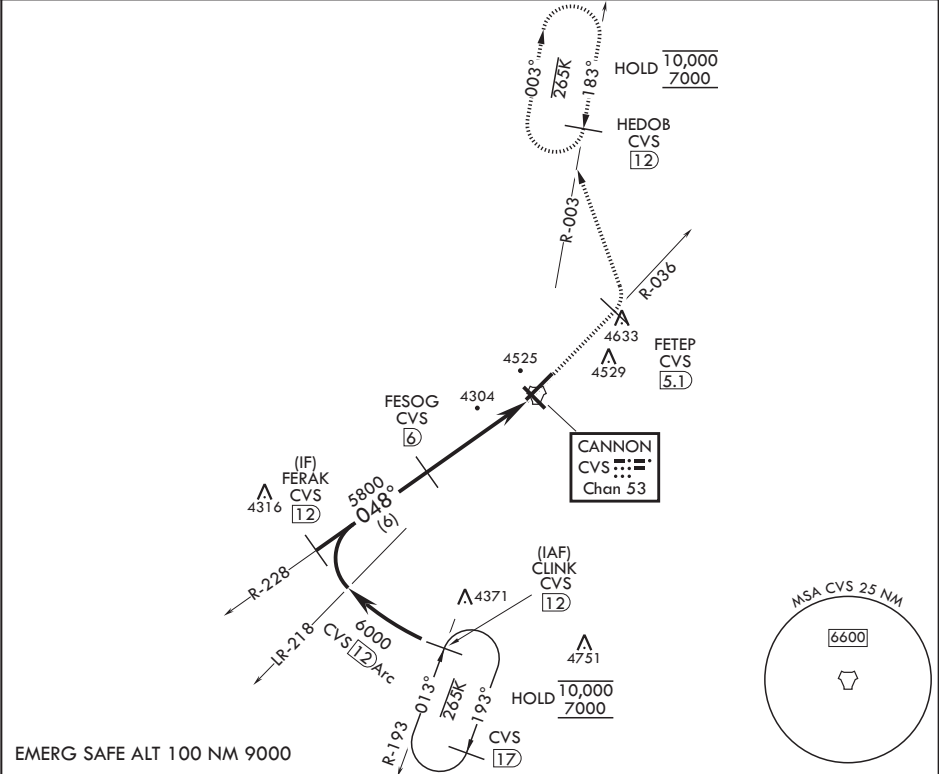
(USAF)

CANNON AFB (KCVS)

Missed approach requires use of RNAV or ATC radar monitoring.
* When ALS inop, increase CAT AB RVR to 55, vis to 1 mile; CAT CDE RVR to 60, vis to 1 1/8 miles.

ALSF-1
MISSED APPROACH: Climb to 6000 via CVS TACAN R-036 to 5.1 DME (FETEP), cross FETEP at or below 6000, then turn left climbing to 7000 to intercept CVS TACAN R-003 to 12 DME (HEDOB) and hold.

ATIS 119.1 269.9	CANNON APP CON 118.425 352.1	TOWER 120.4 270.25	GND CON 121.9 275.8	CLNC DEL 120.2 293.225
---------------------	---------------------------------	-----------------------	------------------------	---------------------------



FERAK CV S 12		6000		048°		FESOG CV S 6		5800		TACAN		MINRE CV S 5		ELEV 4295		TDZE 4284	
2.57° ≥ TCH 41																	
CATEGORY		A		B		C		D		E							
S-4*		4700/24		416 (500-½)		4700/40		416		(500-¾)							
CIRCLING		4840-1		545 (600-1)		4860-1½ 565 (600-1½)		5000-2¼ 705 (800-2¼)		5020-2½ 725 (800-2½)							

Diagram showing runway layout, taxiway, and other ground features. Includes labels for BCN, TWR, and various taxiway segments (A1, A2, A3, B, C, D, E, F, G, H, I, J, K, L, M, N, O, P, Q, R, S, T, U, V, W, X, Y, Z).

TACAN RWY 4

SW-1, 07 AUG 2025 to 04 SEP 2025

SW-1, 07 AUG 2025 to 04 SEP 2025