

# TACAN RWY 31

TACAN CVS Chan <b>53</b>	APCH CRS <b>316°</b>	Rwy Idg <b>8194</b> TDZE <b>4270</b> Arpt Elev <b>4295</b>
-----------------------------	-------------------------	--

(USAF)

CANNON AFB (KCVS)

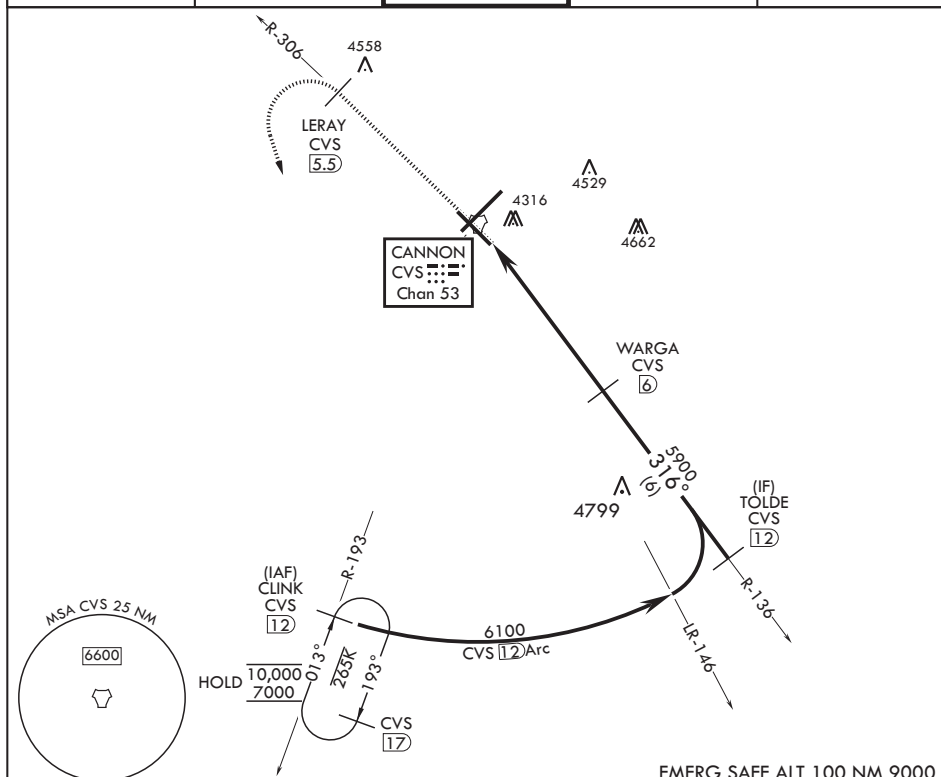
Missed approach requires use of RNAV or ATC radar monitoring.



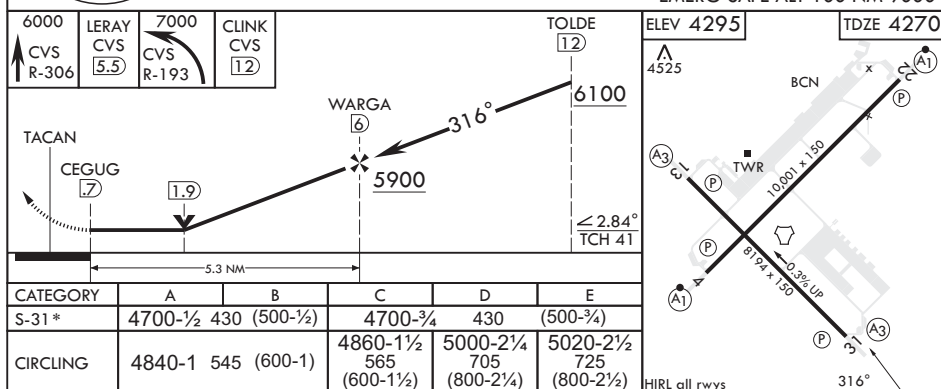

**MISSED APPROACH:** Climb to 6000 out CVS TACAN R-306 to 5.5 DME (LERAY) then turn left climbing to 7000 intercept CVS TACAN R-193 to 12 DME (CLINK) and hold.

**T** \* When ALS inop, increase CAT AB vis to 1 mile, CAT CDE increase vis to 1 3/8 miles.

ATIS 119.1 269.9	CANNON APP CON 118.425 352.1	TOWER 120.4 270.25	GND CON 121.9 275.8	CLNC DEL 120.2 293.225
---------------------	---------------------------------	-----------------------	------------------------	---------------------------



EMERG SAFE ALT 100 NM 9000



CLOVIS, NEW MEXICO

34°23'N - 103°19'W

CANNON AFB (KCVS)

Amdt 3 10OCT19

# TACAN RWY 31

SW-1, 07 AUG 2025 to 04 SEP 2025

SW-1, 07 AUG 2025 to 04 SEP 2025