
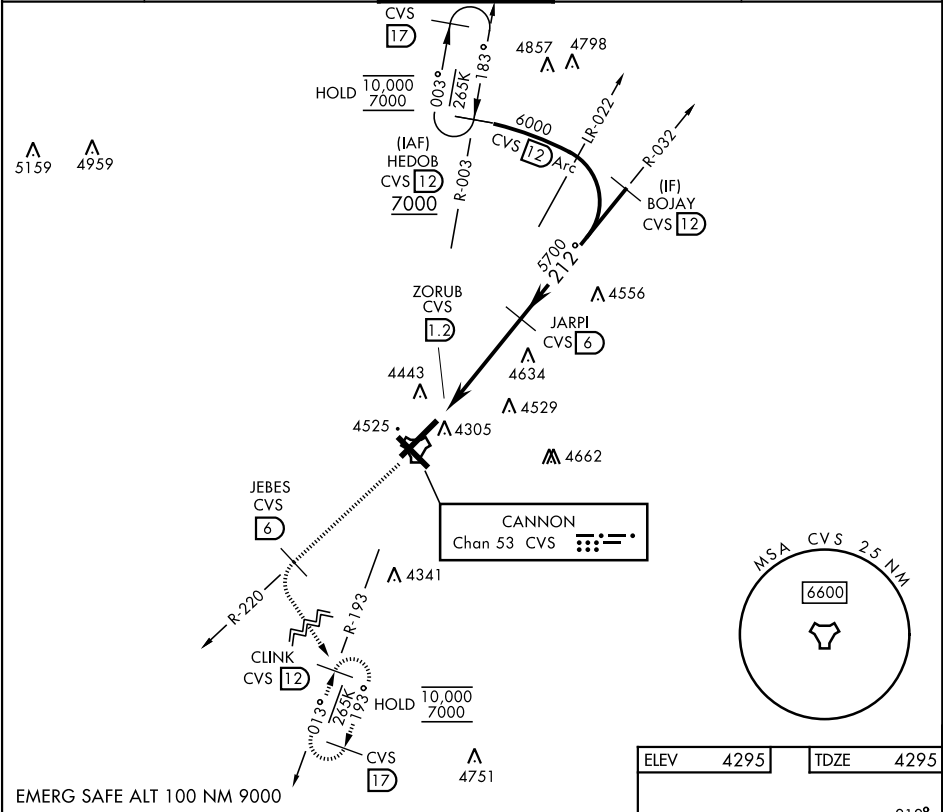


TACAN RWY 22

TACAN CVS Chan 53	APCH CRS 212°	Rwy Idg 10,001 TDZE 4295 Arprt Elev 4295	[USAF]		CANNON AFB (KCVS)	
Missed approach requires use of RNAV or RADAR monitoring.			ALSIF-1		MISSED APPROACH: Climb to 6000 out CVS TACAN R-220 to 6 DME (JEBES) then climbing left turn to 7000 intercept CVS R-193 to 12 DME (CLINK) and hold.	
* When ALS inop, increase CAT AB RVR to 55 and vis to 1 mile, increase CAT CDE vis to 1¼ miles.						
ATIS 119.1 269.9	CANNON APP CON 118.425 352.1		CANNON TOWER 120.4 270.25		GND CON 121.9 275.8	CLNC DEL 120.2 293.225



6000

CVS R-220

JEBES CVS 6

7000

CLINK CVS 12

VGSI and descent angles not coincident.

CVS TACAN

ZORUB CVS 1.2

CVS 2.9

JARPI CVS 6

BOJAY CVS 12

5700

212°

6000

2.67° TCH 33

4.8 NM

CATEGORY	A	B	C	D	E
S-22 *	4900/24	605 (700-½)	4900-1⅜	605 (700-1⅜)	
CIRCLING	4900-1	605 (700-1)	4900-1⅜ 605 (700-1⅜)	5000-2¼ 705 (800-2¼)	5020-2½ 725 (800-2½)

