

CLOVIS, NEW MEXICO

RNAV (GPS) RWY 31

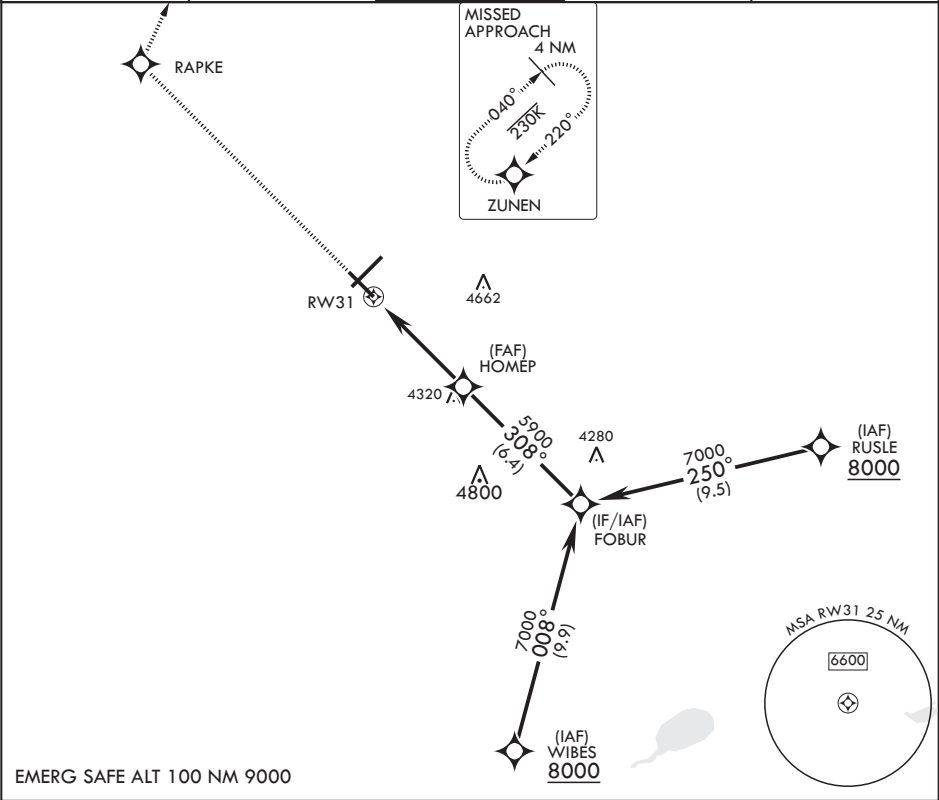
APCH CRS	Rwy Idg	8194
308°	TDZE	4270
	Arprt Elev	4295

(USAF)

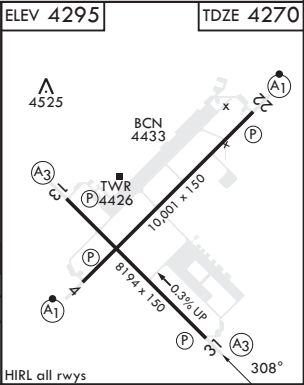
CANNON AFB (KCVS)

RNP APCH	SSALR	MISSED APPROACH: Climb to 7000 direct RAPKE, then turn right to ZUNEN and hold.
▼ * When ALS inop, increase CAT AB vis to 1 mile, CAT CDE vis to 1 3/8 miles.		

ATIS 119.1 269.9	CANNON APP CON 118.425 352.1	TOWER 120.4 270.25	GND CON 121.9 275.8	CLNC DEL 120.2 293.225
---------------------	---------------------------------	-----------------------	------------------------	---------------------------



				ELEV 4295	TDZE 4270
1.3 NM to RWY 31		308°		7000	
≤ 3.06° TCH 41		5900			
4.9 NM					
CATEGORY	A	B	C	D	E
LNAV MDA*	4720-½	450 (500-½)	4720-¾	450 (500-¾)	
CIRCLING	4840-1	545 (600-1)	4860-1½ 565 (600-1½)	5000-2¼ 705 (800-2¼)	5020-2½ 725 (800-2½)



CLOVIS, NEW MEXICO

34°23'N - 103°19'W

CANNON AFB (KCVS)

Amdt 5 28DEC23

RNAV (GPS) RWY 31

SW-1, 07 AUG 2025 to 04 SEP 2025

SW-1, 07 AUG 2025 to 04 SEP 2025