

CLOVIS, NEW MEXICO

RNAV (GPS) RWY 22

WAAS CH 41173 W22A	APCH CRS 218°	Rwy ldg TDZE Arpt Elev	10,001 4295 4295
--------------------------	------------------	------------------------------	------------------------

(USAF)

CANNON AFB (KCVS)

Missed approach requires use of RNAV or ATC radar monitoring.

ALSIF-1

MISSED APPROACH: Climb to 7000 direct JEBES, track 171° to CLINK and hold.

* When ALS inop, increase RVR to 40, vis to 3/4 mile.
** When ALS inop, increase vis to 1 1/4 miles.



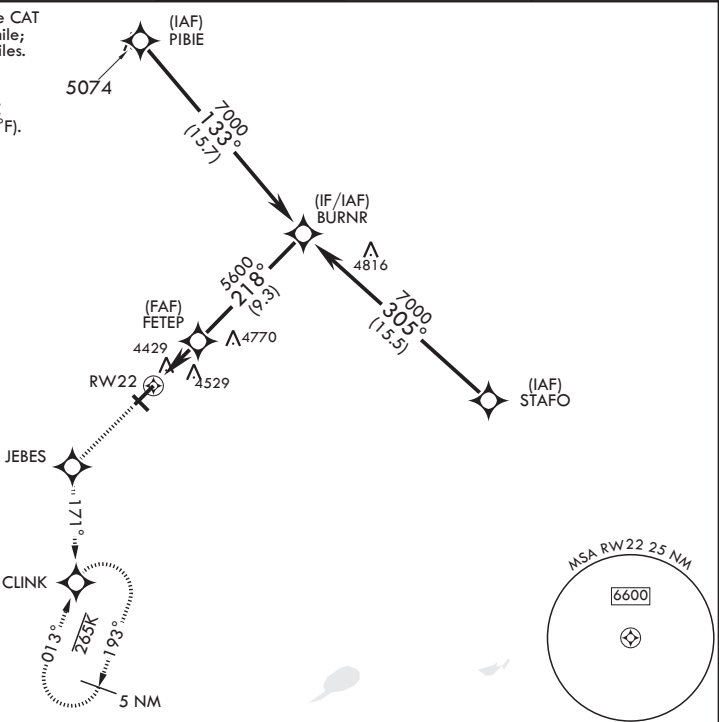
ATIS 119.1 269.9	CANNON APP CON 118.425 352.1	TOWER 120.4 270.25	GND CON 121.9 275.8	CLNC DEL 120.2 293.225
---------------------	---------------------------------	-----------------------	------------------------	---------------------------

*** When ALS inop, increase CAT
AB RVR to 55, vis to 1 mile;
CAT CDE vis to 1 1/4 miles.

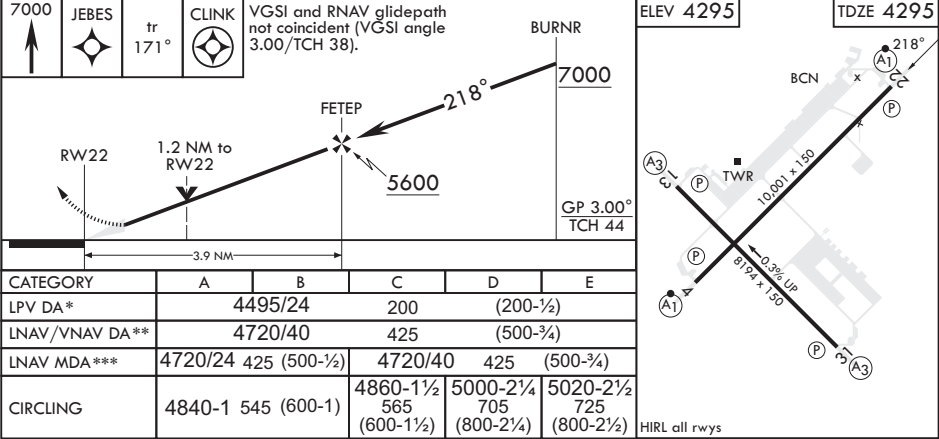
For uncompensated
Baro-VNAV systems,
Procedure NA below -23°C
(-9°F) or above 54°C (130°F).

DME/DME RNP-0.3 NA

CAUTION: Group
4 WCH 19ft.



EMERG SAFE ALT 100 NM 9000



CLOVIS, NEW MEXICO

Amdt 6 16JUL20

34°23'N - 103°19'W

CANNON AFB (KCVS)

RNAV (GPS) RWY 22