

YUMA, ARIZONA

VOR/DME or TACAN RWY 17

VORTAC BZA 116.8 Chan 115	APCH CRS 167°	Rwy Idg TDZE Arpt Elev 5710 197 213
---------------------------------	------------------	--

[USN]

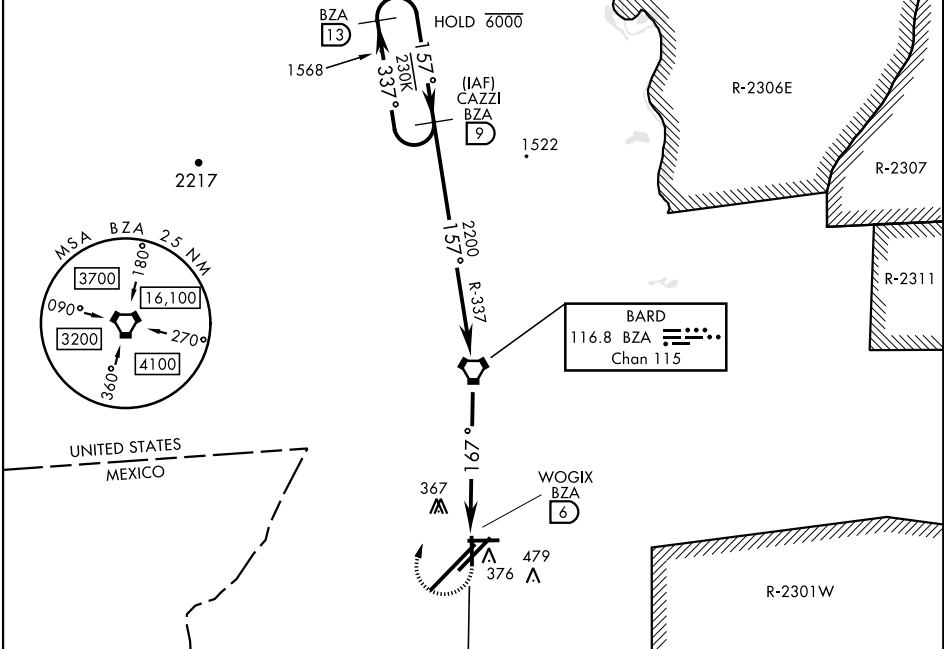
YUMA MCAS/YUMA INTL (KNYL)

MISSED APPROACH: Climb to 1000, then climbing right turn to 3800 direct BZA VORTAC and BZA R-337 to CAZZI and hold.	
---	--

ATIS 118.8 273.5	APP CON 124.7 371.975	TOWER 119.3 (CTAF) 0 377.075	GND CON 121.9 314.0	CLNC DEL 118.0 336.4	ASR/ PAR
---------------------	--------------------------	---------------------------------	------------------------	-------------------------	-------------

Knots	60	120	180	240	300	360
V/V(fpm)	210	420	630	840	1050	1260

Min climb of 210 ft/NM to 3800 - Controlling Obstacle Ukn



EMERG SAFE ALT 100 NM 17,100		ELEV 213		TDZE 197	
CAZZI BZA 9		3L-21R 13,300 x 200		167°	
BZA 13		3R-21L 9239 x 150			
6000 3800		8-26 6146 x 150			
337° 157°		17-35 5710 x 150			
2200		TWR			
3.08° TCH 40		REIL Rwy 3L, 3R, 21L, 35			
6 NM		HIRL Rwy 3R-21L, 3L-21R			
		HIRL Rwy 8-26, 17-35			
CATEGORY	A	B	C	D	
S-17	660-1 463 (500-1)		660-1½ 463 (500-1½)		
CIRCLING	680-1 467 (500-1)	700-1 487 (500-1)	800-1½ 587 (600-1½)	800-2 587 (600-2)	

YUMA, ARIZONA

32°39'N-114°36'W

YUMA MCAS/YUMA INTL (KNYL)

Amtd 5 22APR21

VOR/DME or TACAN RWY 17

SW-4, 07 AUG 2025 to 04 SEP 2025

SW-4, 07 AUG 2025 to 04 SEP 2025