

TACAN Y RWY 3L

YUMA MCAS/YUMA INTL (KNYL)

TACAN NYL Chan <b>84</b>	APCH CRS <b>039°</b>	Rwy Idg <b>13,300</b> TDZE <b>195</b> Arpt Elev <b>213</b>
-----------------------------	-------------------------	------------------------------------------------------------------

[USN]

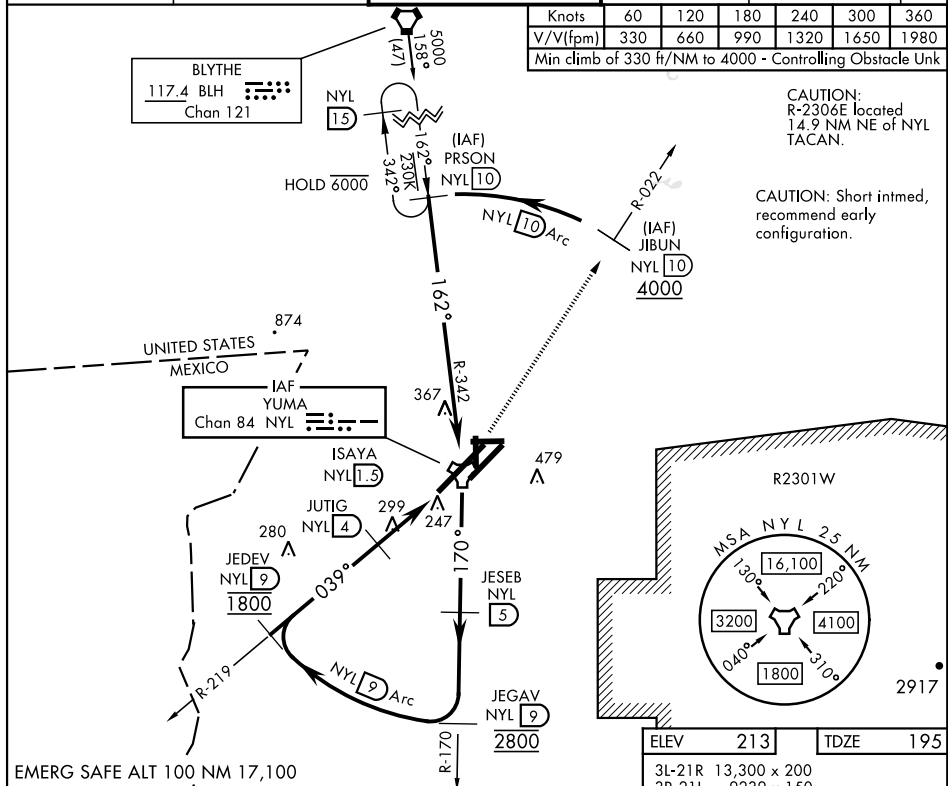
**MISSED APPROACH:** Climbing left turn to 4000, intercept NYL TACAN R-022 to JIBUN, cross JIBUN at or above 4000.

ATIS	APP CON	TOWER	GND CON	CLNC DEL	ASR/ PAR
118.8 273.5	124.7 371.975	119.3 (CTAF) 0 377.075	121.9 314.0	118.0 336.4	

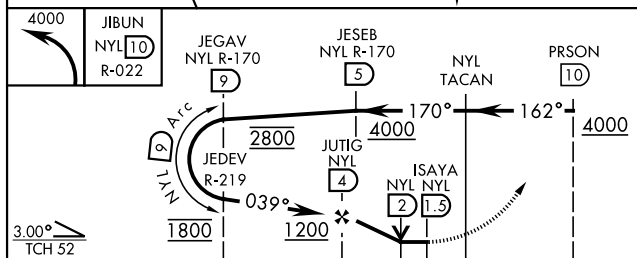
Knots	60	120	180	240	300	360
V/V(fpm)	330	660	990	1320	1650	1980
Min climb of 330 ft/NM to 4000 - Controlling Obstacle Unk						


CAUTION:  
R-2306E located  
14.9 NM NE of NYL  
TACAN.

CAUTION: Short intmed,  
recommend early  
configuration.



ELEV	213	TDZE	195
3L-21R	13,300 x 200		
3R-21L	9239 x 150		
8-26	6146 x 150		
17-35	5710 x 150		



				
CATEGORY	A	B	C	D
S-3L	560-1    365    (400-1)			
<b>C</b> CIRCLING	680-1 467 (500-1)	700-1 487 (500-1)	800-1½ 587 (600-1½)	800-2 587 (600-2)

