

TACAN Y RWY 21R

TACAN NYL Chan <b>84</b>	APCH CRS <b>208°</b>	Rwy Idg <b>13,300</b> TDZE <b>193</b> Arpt Elev <b>213</b>
-----------------------------	-------------------------	--

[USN]

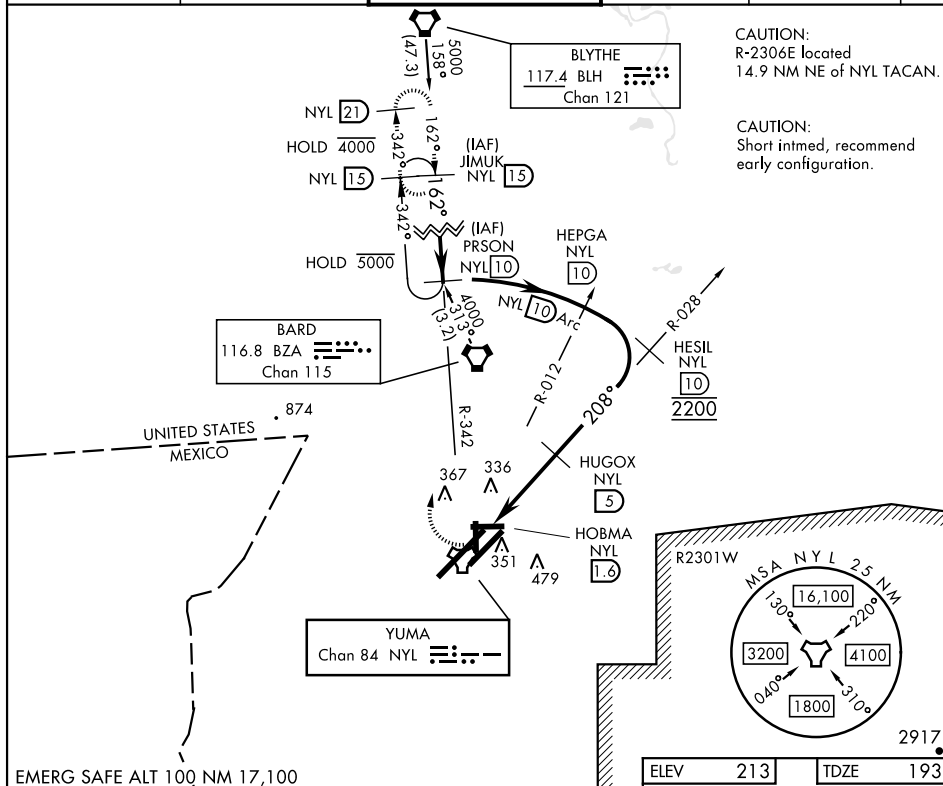
YUMA MCAS/YUMA INTL (KNYL)

**T** \* When ALS inop, increase CAT AB vis to 1 mile, CAT CD vis to 1 3/8 miles.



**MISSED APPROACH:** Climbing right turn to 4000 intercept NYL TACAN R-342 to JIMUK and hold, continue climb-in-hold to 4000.

ATIS	APP CON	TOWER	GND CON	CLNC DEL	ASR/ PAR
118.8 273.5	124.7 371.975	119.3 (CTAF) 0 377.075	121.9 314.0	118.0 336.4	



CATEGORY	A	B	C	D
S-21R *	640-½	447 (500-½)	640- 7/8 447 (500- 7/8)	
CIRCLING	680-1 467 (500-1)	700-1 487 (500-1)	800-1½ 587 (600-1½)	800-2 587 (600-2)

