

YUMA, ARIZONA

RNAV (GPS) RWY 21R

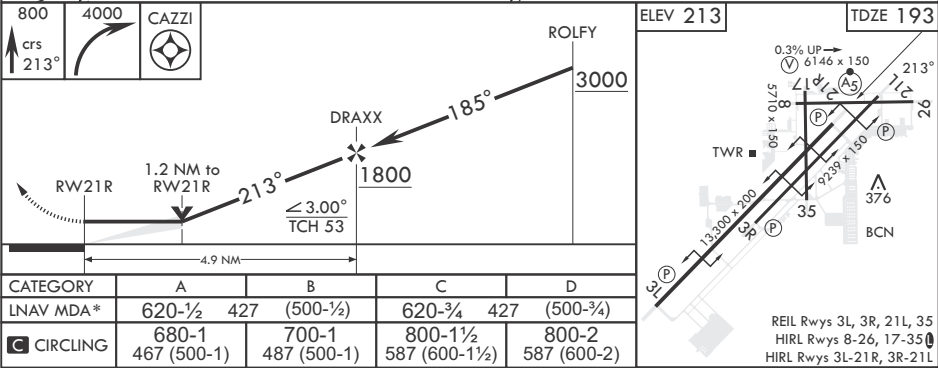
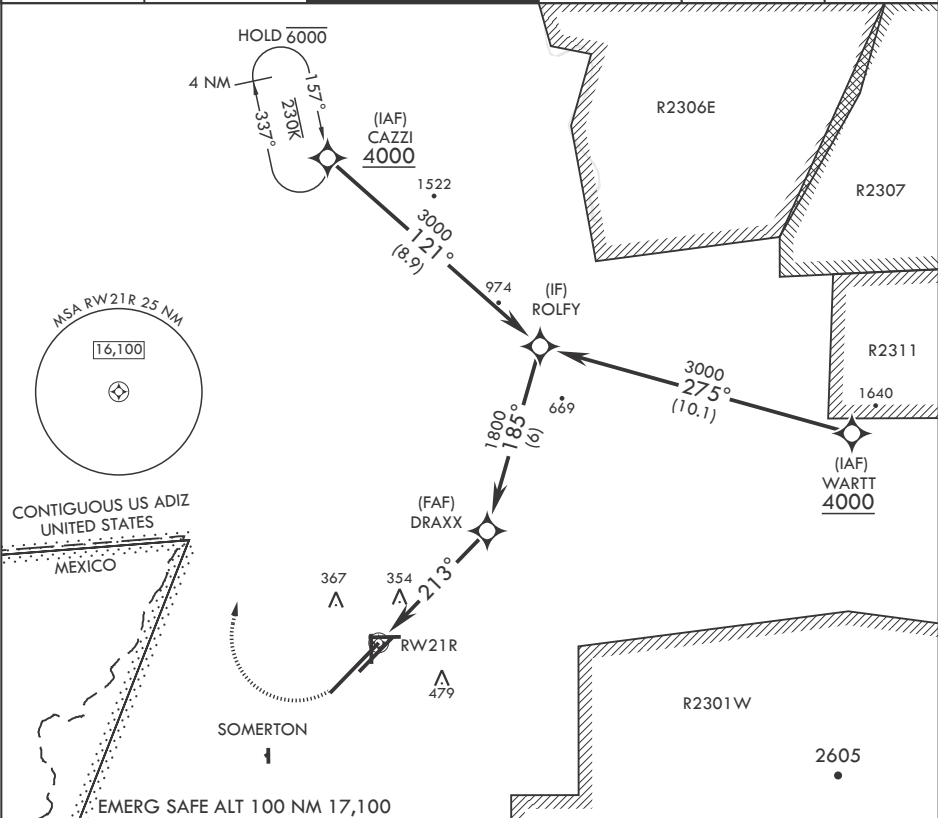
APCH CRS	Rwy Idg	13,300
213°	TDZE	193
	Arpt Elev	213

- (USN)

YUMA MCAS YUMA INTL (KNYL)

RNP APCH	MALSR	MISSED APPROACH: Climb to 800 then, climbing right turn to 4000 direct CAZZI and hold. Continue climb in hold to 4000.
▼ * When ALS inop, increase CAT AB vis to 1 mile, CAT CD vis to 1 1/4 miles.		

ATIS	APP CON	TOWER	GND CON	CLNC DEL	ASR/PAR
118.8 273.5	124.7 371.975	119.3 (CTAF) 377.075	121.9 314.0	118.0 336.4	



YUMA, ARIZONA

32°39'N - 114°36'W

YUMA MCAS YUMA INTL (KNYL)

Amdt 5 22APR21

RNAV (GPS) RWY 21R

SW-4, 07 AUG 2025 to 04 SEP 2025

SW-4, 07 AUG 2025 to 04 SEP 2025