

YUMA, ARIZONA

## RNAV (GPS) RWY 17

APCH CRS 170°	Rwy Idg TDZE Arpt Elev	5710 197 213
------------------	------------------------------	--------------------

- (USN)

YUMA MCAS YUMA INTL (KNYL)

RNP APCH

**MISSED APPROACH:** Climb to 800 then, climbing right turn to 4000 direct CAZZI and hold. Continue climb in hold to 4000.



ATIS  
118.8 273.5

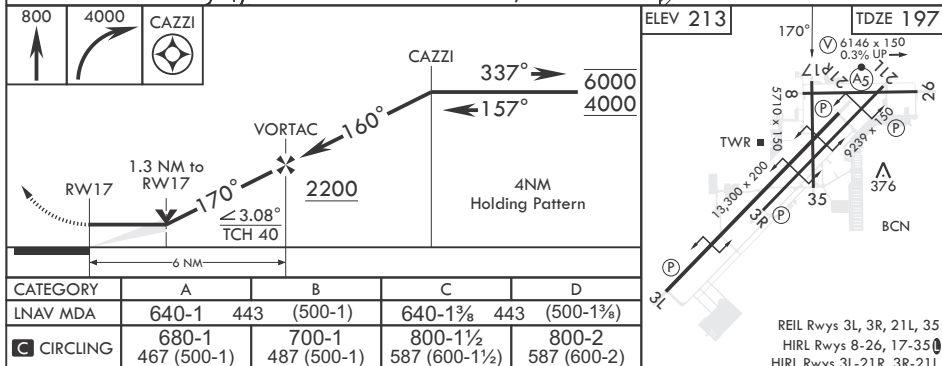
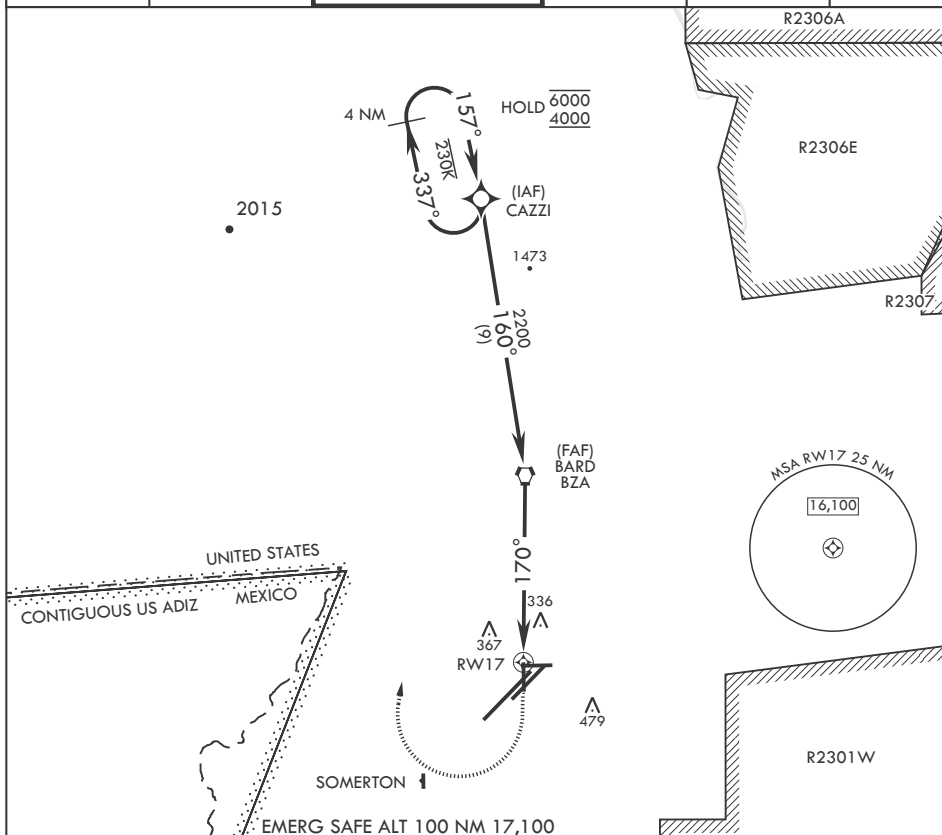
APP CON  
124.7 371.975

TOWER  
119.3 (CTAF) **Q 377.075**

GND CON  
121.9 314.0

CLNC DEL  
118.0 336.4

ASR/PAR



YUMA, ARIZONA

32°39'N - 114°36'W

YUMA MCAS YUMA INTL (KNYL)

Amdt 5 22APR21

## RNAV (GPS) RWY 17

SW-4, 07 AUG 2025 to 04 SEP 2025