

ILS or LOC/DME RWY 21R

LOC I-YUM 108.3	APCH CRS 213°	Rwy ldg 21L 9239 21R 13,300 TDZE 21L 208 21R 193 Arpt Elev 213
---------------------------	-------------------------	---

[USN] YUMA MCAS/YUMA INTL (KNYL)

VOR required

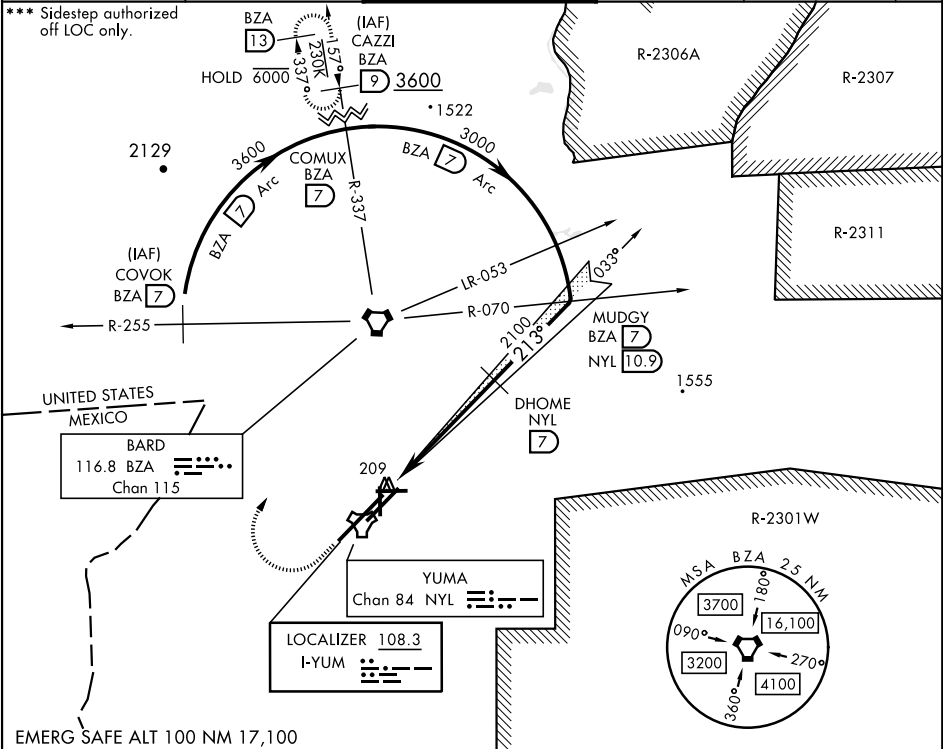





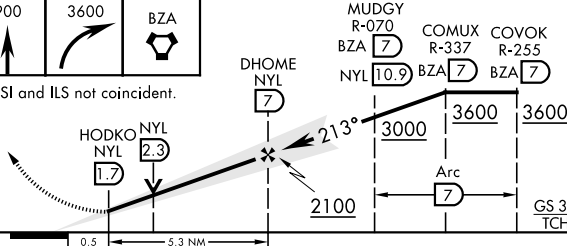

MISSED APPROACH: Climb to 900, then climbing right turn to 3600 direct BZA VORTAC and BZA R-337 to CAZZI and hold.

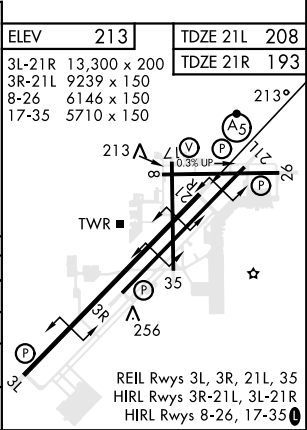
* When ALS inop, increase vis to ¾ mile.
** When ALS inop, increase CAT AB vis to 1 mile, CAT CD vis to 1½ miles.

ATIS 118.8 273.5	APP CON 124.7 371.975	TOWER 119.3 (CTAF) 0 377.075	GND CON 121.9 314.0	CLNC DEL 118.0 336.4	ASR/ PAR
----------------------------	---------------------------------	--	-------------------------------	--------------------------------	-------------

*** Sidestep authorized off LOC only.



900	3600	BZA				
						
VASI and ILS not coincident.						
						
CATEGORY	A		B	C	D	
S-ILS 21R *	393-½		200	(200-½)		
S-LOC 21R **	600-½	407	(400-½)	600-¾	407	(400-¾)
SIDESTEP 21L	600-1	392	(400-1)	600-1½	392	(400-1½)
 CIRCLING	680-1	700-1	800-1½	800-2		
	467 (500-1)	487 (500-1)	587 (600-1½)	587 (600-2)		



ILS or LOC/DME RWY 21R

SW-4, 07 AUG 2025 to 04 SEP 2025

SW-4, 07 AUG 2025 to 04 SEP 2025