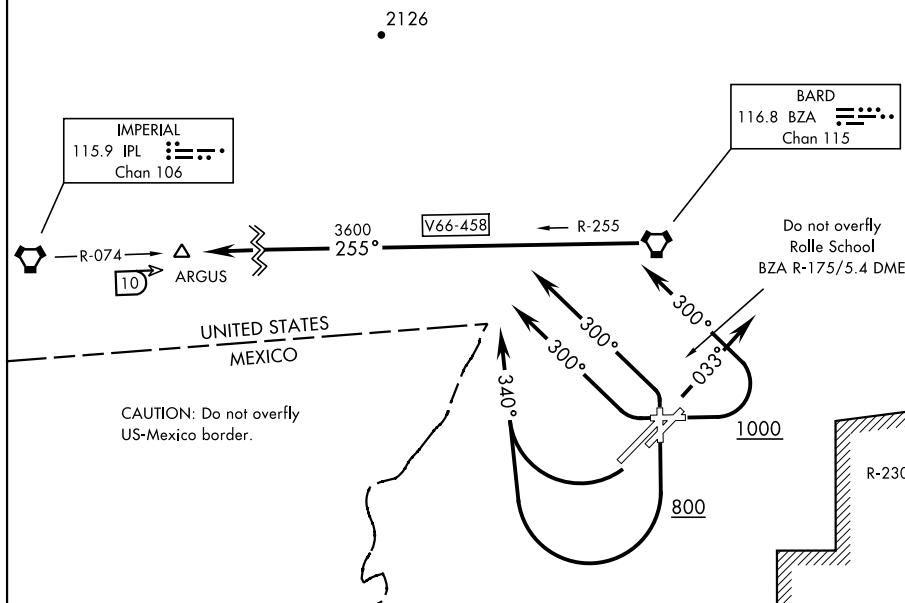


| | |
|--------------|---------|
| ATIS | |
| 118.8 | 273.5 |
| CLNC DEL | |
| 118.0 | 336.4 |
| GND CON | |
| 121.9 | 314.0 |
| TOWER | |
| 119.3 (CTAF) | 377.075 |
| DEP CON | |
| 125.55 | 282.325 |

[USN]



DEPARTURE ROUTE DESCRIPTION

TAKEOFF RWY 3L/R: Climb heading 033°, then RADAR vectors to intercept BZA VORTAC R-255. Thence...

TAKEOFF RWY 8: Climb heading 078° to 1000, then climbing left turn heading 300°, then RADAR vectors to intercept BZA VORTAC R-255. Thence...

TAKEOFF RWY 17: Climb heading 168° to 800, then climbing right turn heading 340°, then RADAR vectors to intercept BZA VORTAC R-255. Thence...

TAKEOFF RWY 21L/R: Climbing right turn heading 340°, then RADAR vectors to intercept BZA VORTAC R-255. Thence...

TAKEOFF RWY 26: Climbing right turn heading 300°, then RADAR vectors to intercept BZA VORTAC R-255. Thence...

TAKEOFF RWY 35: Climbing left turn heading 300°, then RADAR vectors to intercept BZA VORTAC R-255. Thence...

...via BZA R-255 to ARGUS, then via assigned route. Maintain assigned altitude. Expect clearance to filed altitude/flight level 10 minutes after departure.

ARGUS FIVE DEPARTURE (ARGUS5.ARGUS)

YUMA, ARIZONA

YUMA MCAS/YUMA INTL (KNYL)

Orig 22APR21

SW-4, 07 AUG 2025 to 04 SEP 2025